

# CERTIFIED CORNER RECORDATION

Corner Cor. of Secs. 28, 29, 32, 33 T. 36N R. 27W P.M.M. Lincoln County

1. 1893 original G.L.O. record by Peter McCordell and Abram L. Jaqueth: Set stone and marked four bearing trees.

1969 remonumentation B.L.M. record by Roy G. Leedy: The cor. of secs. 28, 29, 32 and 33 monumented with a limestone, 14x10x5 ins., firmly set, mkd. 4 notches on the E. and 1 notch on the S. edges, and witnessed by the remains of the original bearing trees:

A fir, 16 ins. diam., bears N58°W, 40 lks. dist., mkd. 36N 27W BT.  
A fir, 16 ins. diam., bears S83°E, 30 lks. dist., mkd. with rotted blaze.  
A fir, 16 ins. diam., bears S62 1/2°W, 20 lks. dist., mkd. with an overgrown blaze.  
A stump, bears N35 1/2°W, 14 lks. dist., with fallen log mkd. S29, lying alongside.

At the corner point

Set an iron post, 30 ins. long, 2 1/2 ins. diam., 16 ins. in the ground, to bedrock, and in a mound of stone, 3 ft. diam., to top, with brass cap mkd,

From which

A fir, 8 ins. diam., bears S33 1/2°E, 70 lks. dist., mkd. T36N R27W S33 BT.  
A fir, 9 ins. diam., bears N5 1/4°W, 69 lks. dist., mkd. T36N R27W S29 BT.  
Bury the original stone alongside the iron post.

1997 Certified Corner Recordation by Ronald A. Pearson. MT Reg. No. 9008LS:  
Found the B.L.M. pipe and remains of 5 bearing trees.

Established three new bearing trees

A fir, 4 ins. diam., bears N81°E, 32.4 ft. dist., mkd. X BT with snow blaze.  
A larch, 3 ins. diam., bears S2°E, 22.6 ft. dist., mkd. X BT with snow blaze.  
A larch, 4 ins. diam., bears N82°W, 53.5 ft. dist., mkd. X BT with snow blaze.  
Painted red bands around the bearing trees and attached Land Survey Monument and Bearing Tree signs.  
Set a 6 ft. galvanized steel guard post with Land Survey Marker and Property Boundary decals, West, 3 ft.

2007 Certified Corner Recordation by Steven A. Boyer. MT Reg. No. 9750LS:  
Found the BLM pipe and bearing trees from the Pearson recordation.

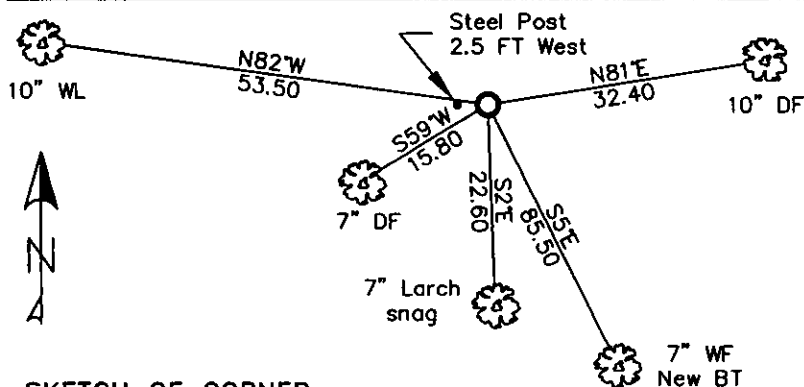
Established one new bearing tree

A fir, 5 ins. diam., bears S59°W, 15.8 ft. dist., mkd. T36N R27W S32 BT.  
Painted red the scribed faces and 6 ins. bands on the bearing trees.  
Attached Land Survey Monument and Bearing Tree signs.

2. Found 3 1/4 ins. BLM brass monument 10 ins. out of ground surrounded by small mound of stone.  
A 10 ins. douglas fir N81°E 32.40 ft. well healed face.  
A 6 ins. larch snag S2°E 22.60 ft. well healed face.  
A 7 ins. douglas fir S59°W 15.80 ft. partially healed face, illegible scribing visible.  
A 10 ins. western larch N82°W 53.50 ft. well healed face.

3. Restacked and painted stones around monument. Painted rings & blazes on all BT's, replaced tags as need, cleared brush.  
New BT in Sec 33 to replace larch snag using 16° declination.  
Established: A 7 ins. western larch S5°E 85.50 ft., scribed T36N R27W S33 BT.

MAGNETIC DECLINATION - 16° EAST



SKETCH OF CORNER

CERTIFICATION

I, CURT HECKROTH, certify the information shown above is true and correct.

Signature Ground Party: *Curt Heckroth*

I, LAWRENCE A. GLAHE, certify that this Corner Recordation was performed by me or under my direct supervision in compliance with the "Corner Recordation Act" (MCA 82-101, et seq., M.C.A.)

Signature Registered Professional Engineer: *Lawrence A. Glahe*

Date: 1-25-10

Employer: GLAHE & ASSOCIATES

9748 LS

Office of Clerk and Recorder, County of Lincoln This "corner

record" was filed for record on

was noted on the cross-index

book No.

224096 BOOK: CCR CC&R'S PAGE: 11348 Pages: 1  
STATE OF MONTANA LINCOLN COUNTY  
RECORDED: 01/27/2010 12:18 KOI: CC&R'S  
TAMMY D. LAUER CLERK AND RECORDER  
FEE: \$0.00  
TO: FILED

Cross Index No. V-9 T. 36N R. 27W PMM

Adopted July 1, 1981, Montana Board of Professional Engineers & Land Surveyors

Sec. 28


● corner this sheet