

CERTIFIED CORNER RECORDATION

Corner South 1/4 Sec. 33 T. 36N R. 27W P.M.M. Lincoln County

1. 1893 original Township Survey of Boundary Lines, T36N, R27W by Peter McCardell & Abram L. Jaqueth.

Set a limestone, 14x10x4 ins. 10 ins. in the ground, for 1/4 Sec. Cor. marked 1/4 on N. face,

from which

A fir, 6 ins. diam., bears S27°W, 91 lks. dist. marked 1/4 S. BT.

A fir, 6 ins. diam., bears N48°30'W, 48 lks. dist. marked 1/4 S. BT

2003 Certified Corner Recordation by Alvah F. Hughes, MT. Reg. No. 7322-LS

Found a limestone, 19x7x3 ins., laying on the ground marked 1/4 on face - hole for stone is still visible and distinct,

from which

A root crown with fir bark, bears S27°W, 60.0 FT (91 lks.) dist., no visible scribe.

A root crown with fir bark, bears N48°W, 31.7 FT (48 lks.) dist., no visible scribe.

Set in the original found stone hole, a 2 1/2 ins. diam. x 30 ins. aluminum pipe, 6 ins. above ground with 3 1/4 ins. diam. aluminum cap marked as shown:

from which:

A larch, 6 ins. diam., bears N58°E, 30.3 ft. dist., marked X-BT.

A douglas fir, 9 ins. diam., bears N42°W, 8.6 ft. dist., marked 1/4 S33 BT.

Attached bearing Tree signs and painted a 1 ft. red band around each tree.

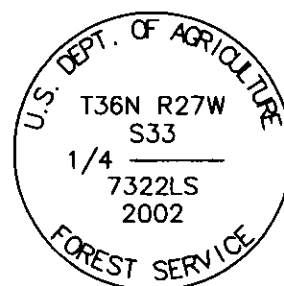
Buried original stone alongside and raise a small mound of stone around pipe.

2. Found 3 1/4 ins. USFS aluminum cap marked as shown.

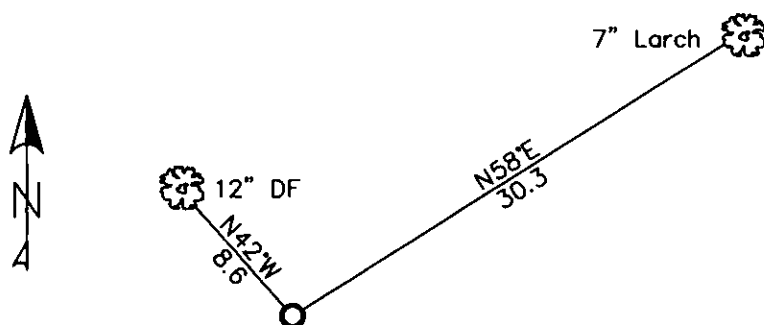
A 7 ins. larch bears N58°E, 30.3 ft. visible scribe.

A 12 ins. douglas fir bears N42°W, 8.6 ft. healed blaze.

3. Cleared brush from surrounding area, repainted rings and blazes on existing BT's, replaced LSM & BT signs as needed.



MAGNETIC DECLINATION - 16° EAST



SKETCH OF CORNER

CERTIFICATION

I, ERICH SCHRACK,
certify the information shown above is true and correct.

Signature Ground Party (Not)

I, LAWRENCE A. GLAHE,
certify that this Corner Record correctly represents work performed by me or under my direct supervision in compliance with the "Corner Restoration Act" (LRS-2-101, et seq., M.C.A.)

Signature

Date: 1-25-12 Reg. No. 9748 LS

Employer: GLAHE & ASSOCIATES, INC.

Office of Clerk and Recorder, County of Lincoln. This "corner

record" was filed for record c

224095 BOOK: CCR CC&R'S PAGE: 11347 Pages: 1

was noted on the cross-index

STATE OF MONTANA LINCOLN COUNTY

RECORDED: 01/27/2010 12:17 KOI: CC&R'S

book No. _____

TAMMY D. LAUER CLERK AND RECORDER

FEE: \$0.00

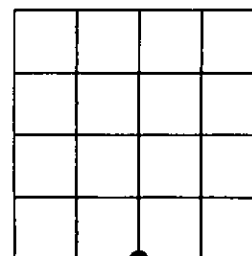
TO: FILED

BY: [Signature]
Deputy

Cross Index No. Z-11 T. 36N R. 27W PMM

Adopted July 1, 1981, Montana Board of Professional Engineers & Land Surveyors

Sec. 33



• corner this sheet