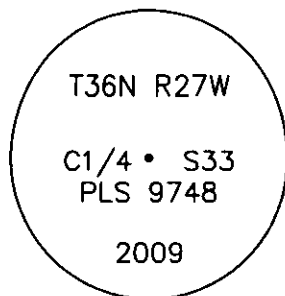


CERTIFIED CORNER RECORDATION

Corner C 1/4 Sec. 33 T. 36N R. 27W P.M.M. Lincoln County

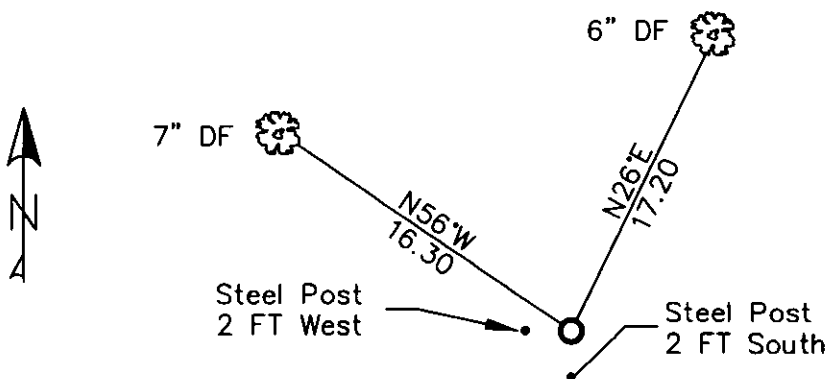
1. No previous record.
2. No evidence found.
3. At the corner point, as determined by survey, set 9-8-09
A standard 3 1/4 ins. USFS Aluminum Cap on 2 1/2 ins. dia. aluminum pipe
and stamped as shown.



From which

- A 6 ins. douglas fir bears N26°E, 17.2 ft., scribed C1/4 S33 BT.
- A 7 ins. douglas fir bears N56°W, 16.3 ft., scribed C1/4 S33 BT.
- A steel post West and South 2.0 ft. with Land Survey Markers and Property Boundary decals.
- Painted red bands around BTs and attached LSM and BT signs.

MAGNETIC DECLINATION - 16° EAST



SKETCH OF CORNER

CERTIFICATION

I, ERICH SCHRACK
certify the information shown is true and correct.

Signature Ground Posty (BT)

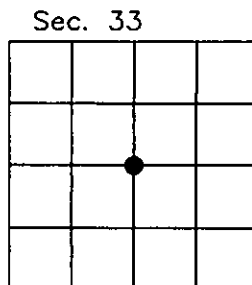
I, LAWRENCE A. GLAHE
certify that the Corner Record correctly represents what
performed by me or under my direction in compliance with
the "Corner Restoration Act" (MCA 12-1-101, et seq., MCA.)

Date: 12-5-10 9748 LS
Employer: GLAHE & ASSOCIATES, INC.

Office of Clerk and Recorder, County of Lincoln. This "corner
record" was filed for r 224094 BOOK: CCR CC&R'S PAGE: 11346 Pages: 1
STATE OF MONTANA LINCOLN COUNTY
was noted on the cross RECORDED: 01/27/2010 12:16 KOI: CC&R'S
book No. TAMMY D. LAUER CLERK AND RECORDER
FEE: \$0.00 BY: Joanne R. Rasmussen
TO: FILED

Cross Index No. X-11 T. 36N R. 27W PMM

Adopted July 1, 1981, Montana Board of Professional Engineers & Land Surveyors



● corner this sheet