

CERTIFIED CORNER RECORDATION

Corner 1/4 Cor. Secs. 32 & 33 T. 36N R. 27W P.M.M. Lincoln County

1. 1893 original G.L.O. record by Peter McCardell and Abram L. Jaqueth: Set stone and marked two bearing trees.

1969 remonumentation B.L.M. record by Roy G. Leedy: The 1/4 sec. cor. of secs. 32 and 33, monumented with a limestone, 16x10x4 ins., firmly set, mkd. 1/4 on the W. face and witnessed by the remains of the original bearing trees:

A stump hole, bears S82°E, 58 lks. dist.
A stump, bears N75 1/2°W, 35 lkd. dist., mkd. T.

At the corner point

Set and iron post, 30 ins. long, 2 1/2 ins. diam., 24 ins. in the ground with brass cap mkd as shown.

From which

A fir, 10 ins. diam., bears S39°E, 46 lks. dist., mkd. 1/4 S33 BT.
A fir, 12 ins. diam., bears S75°W, 34 lks. dist., mkd. 1/4 S32 BT.
Bury the original stone alongside the iron post and raise a collar of stone, 2 ft. diam., around the iron post.

1999 Certified Corner Recordation by Ronald A. Pearson. MT Reg. No. 9008LS:

Found a 2 1/2 ins. diam., iron pipe, 8 ins. out of a mound of stone with 3 1/4 ins. diam., BLM brass cap marked as shown, from which

A fir, 11 ins. diam., bears S39°E 30.3 ft. (46 lks.) dist., healed face.
A fir, 14 ins. diam., bears S75°W 22.4 ft. (34 lks.) dist., visible scribe.
No evidence of original bearing trees.
Painted red bands around the bearing trees and attached Land Survey Monument and Bearing Tree signs.

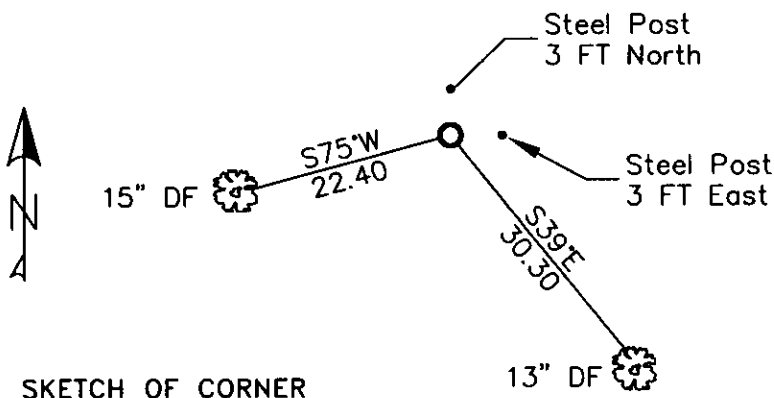
2. Found 3 1/4 ins. BLM brass monument 8 ins. out of ground surrounded by small mound of stone.

A 13 ins. douglas fir S39°E, 30.30 ft. to aluminum nail, well healed face.
A 15 ins. douglas fir S75°W, 22.40 ft. to Aluminum nail, partially healed face BT visible.
Steel posts 3 ft. North and 3 ft. East, with LSM and boundary decals.

3. Painted mound of stone. Repainted rings and blazes on BT's.
All signs are in good shape.

T36N R27W
1/4
S32|S33
1969

MAGNETIC DECLINATION - 16° EAST



CERTIFICATION
I, CURT HECKROTH *Curt Heckroth*
certify the information shown is true and correct.

Signature Ground Party: Lawrence A. Glahe
I, LAWRENCE A. GLAHE
certify that this Corner Record correctly represents work performed by me or under my direct supervision in compliance with the "Corner Recordation Act" (70-22-101, et seq., M.C.A.)

Date: 1-25-10 9748 LS
Employer: GLAHE & ASSOCIATES, INC.

REGISTERED LAND SURVEYOR 9748 LS

Office of Clerk and Recorder, County of Lincoln This "corner

record" was filed for record 224093 BOOK: CCR CC&R'S PAGE: 11345 Pages: 1

was noted on the cross-in STATE OF MONTANA LINCOLN COUNTY

book No. RECORDED: 01/27/2010 12:15 KOI: CC&R'S

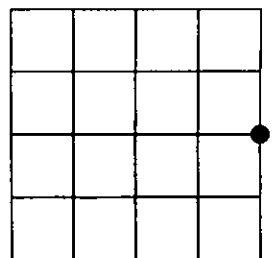
TAMMY D. LAUER CLERK AND RECORDER

TO: FILED BY: *Tammy D. Lauer*

Cross Index No. X-9 T. 36N R. 27W PMM

Adopted July 1, 1981, Montana Board of Professional Engineers & Land Surveyors

Sec. 32



● corner this sheet