

CERTIFIED CORNER RECORDATION

Corner N1/4 Corner, Section 33 T. 36N R. 27W P.M.M. Lincoln County

1. 1893 original G.L.O. record by Peter McCordell et. al. :

Set a limestone, 14x12x8 ins., 10 ins. in the ground for 1/4 sec. cor. mkd.
"1/4" on the North face.

Established two bearing trees:

- A larch, 5 ins. diam., bears S78°30'E, 12 lks. dist., marked "1/4 S BT".
- A larch, 4 ins. diam., bears N81°W, 26 lks. dist., marked "1/4 S BT".

1968 Remonumentation Record by Joseph E. French et. al.: The 1/4 section corner of Sections 28 and 33, monumented with a limestone, 16x12x8 ins., firmly set, marked as described in the original record and witnessed by the remains of the original bearing trees.

At the corner position:

Set on iron post, 30 ins. long, 2 1/2 ins. diam. iron post,
22 ins. in the ground, with the brass cap marked as shown.

Established one new bearing tree:

- A larch, 9 ins. diam., bears S28°E, 26 lks. dist., marked "1/4 S33BT".
- Buried the original stone alongside the iron post.

1997 Certified Corner Recordation by Ronald A. Pearson, MT Reg. No. 9008LS:

Found a 2 1/2 ins. diam. Iron Pipe, firmly set, protruding 10 ins. above the ground,
with a B.L.M. brass cap marked as shown.

From which:

- A larch, 12 ins. diam., bears S28°E, 17.2 ft. dist., with a healed face (BLM-record).
- A larch, 8 ins. diam., bears N77°W, 17.8 ft. dist., with a healed face (GLO-record-N81°W, 26 lks., -17.2 ft.)

Set:

A 6 ft. steel guard post, West, on property line, 2.0 ft. dist. from the corner, with
Land Survey Monument and Property Boundary decals attached.

Painted bearing trees and attached Land Survey Monument and Bearing Tree signs.

Magnetic Declination: 20° East.

2. Found 3 1/4 ins. BLM brass cap monument on 2 1/2" Iron Pipe stamped as shown.

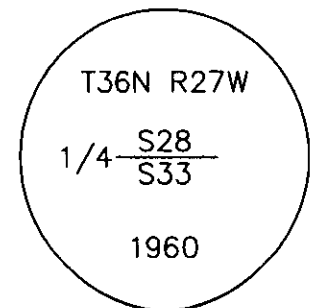
From which:

- A 12 ins. larch bears S28°E, 17.2 feet with well healed blaze.
- A larch snag bears N81°W, 26 lks.
- A Steel Post bears West, 2.0 feet with PB and LSM sign.

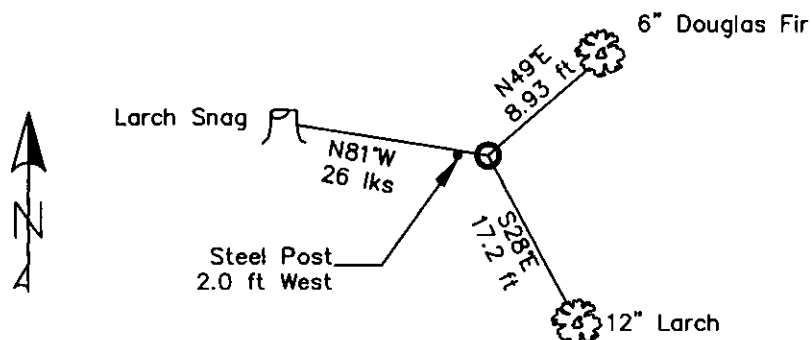
3. Painted rings and blazes on all BTs and attached LSM and BT signs.

Established one new bearing tree:

- A 6 ins. douglas fir bears N49°E, 8.93 feet and scribed "1/4 S28 BT".



MAGNETIC DECLINATION - 16° EAST



SKETCH OF CORNER

CERTIFICATION

I, ERICH SCHRACK
certify the information shown is true, correct and correct.

I, LAWRENCE A. GLAHE
certify that this Corner Recordation represents work performed by me or under my direct supervision in compliance with the "Corner Recordation Act" (20-2-101 et seq., M.C.A.)

Date: 1/25/10 No. 9748 LS
Employer: GLAHE & ASSOCIATES, INC.

REGISTERED LAND SURVEYOR

Office of Clerk and Recorder, County of Lincoln. This "corner

record" was filed for record o

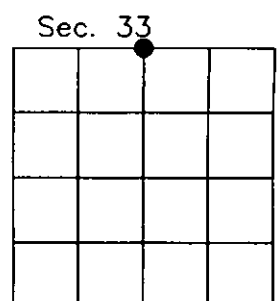
was noted on the cross-index

book No. _____

224092 BOOK: CCR CC&R'S PAGE: 11344 Pages: 1
STATE OF MONTANA LINCOLN COUNTY
RECORDED: 01/27/2010 12:14 KOI: CC&R'S
TAMMY D. LAUER CLERK AND RECORDER
FEE: \$0.00 BY: Jessie Lauer
TO: FILED

Cross Index No. V-11 T. 36N R. 27W PMM

Adopted July 1, 1981, Montana Board of Professional Engineers & Land Surveyors



● corner this sheet