

CERTIFIED CORNER RECORDATION

Corner West 1/4 Cor. Sec. 34 T. 36N R. 27W P.M.M. Lincoln County

1. 1893 original G.L.O.: Set a limestone, 14x10x4 ins. 10 ins. in the ground, for 1/4 Sec. Cor. mkd. 1/4 on W. face, from which
A tamarack, 16 ins. diam., bears S80°E, 27 lks, dist., mkd. 1/4 S BT.
A tamarack, 7 ins. diam., bears S40°W, 15 lks, dist., mkd. 1/4 S BT

1960 BLM Remonumentation: The 1/4 sec. cor. of secs. 33 and 34, monumented with a limestone, 12x6x4 ins., firmly set, mkd. 1/4 on the W. face and witnessed by the original bearing trees. Set an iron post, 30 ins. long, 2 1/2 ins. dia., 26 ins. in the ground, in concrete, with brass cap mkd as shown.

From which the original bearing trees:

- A larch, 20 ins. dia., bears S88 1/2°E, 27 lks. dist., mkd. 1/4 S BT. (Record S80°E, 27 lks.)
- A larch, 14 ins. dia., bears S42 1/2°W, 15 lks. dist., mkd. with an overgrown blaze. (Record S40°W, 15 lks.)

1987 Certified Corner Recordation by Philip A. Helps, MT Reg. No. 4739S:
Found a BLM brass cap, mkd. as shown,

from which

- A larch, 18 ins. dia., bears S87 3/4°E, 12.6 ft. dist., with scribing visible. (GLO 1893 BT)
- A larch, 13 ins. dia., bears S40 3/4°W, 9.7 FT. dist., mkd. with an overgrown blaze. (GLO 1893 BT)
- Mound of stone W. of the iron post.
- Set a galvanized steel post with a Survey Marker decal, 3 ft. North of the brass cap.
- Painted red bands around the bearing trees and painted the scribing and blazing.
- Attached Bearing Tree signs and Land Survey Monument signs.

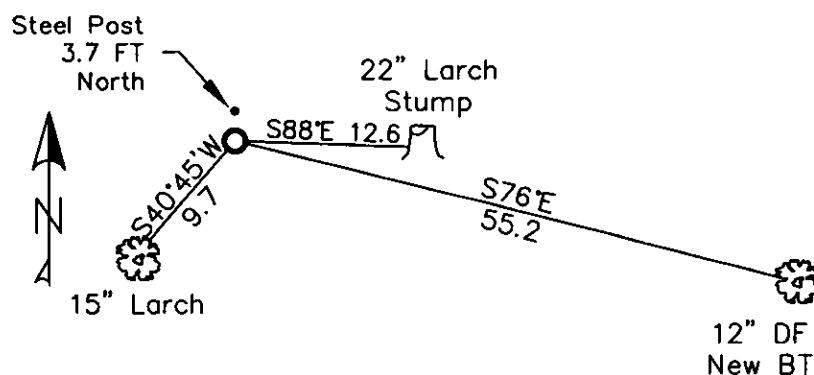
2. Found:

- A 3 1/4 ins. BLM brass cap on 2 1/2 ins. iron pipe stamped as shown.
- A 15 ins. larch bears S40 3/4°W 9.7 ft. (healed blaze).
- A 22 ins. larch stump bears S87 3/4°E 12.6 ft.
- A steel post bears North 3.7 ft. (LSM sign)
- A 5 ins. fir bears S54°W, 2.3 ft. (Loc. sign)

T36N R27W
1/4
S33 | S34
1960

3. Repainted rings & blazes BTS and replaced alum. nails, LSM & BT tags as needed, cleared brush.
Established: A 12 ins. douglas fir bears S76°E, 55.18 ft. scribed 1/4 S34 BT.

MAGNETIC DECLINATION - 16° EAST



SKETCH OF CORNER

CERTIFICATION

I, ERICH SCHRACK
certify the information is true and correct.

I, LAWRENCE A. GLAHE
certify that this Corner Recordation was performed by me or under my direct supervision in compliance with the "Corner Recordation Act" L.R.C. 22-101, et seq. M.C.A.

Date: 1-25-10 9748 LS
Employer: GLAHE & ASSOCIATES, INC.

REGISTERED LAND SURVEYOR

Office of Clerk and Recorder, County of Lincoln. This "corner

record" was filed for record c 224091 BOOK: CCR CC&R'S PAGE: 11343 Pages: 1

was noted on the cross-index: RECORDED: 01/27/2010 12:13 KOI: CC&R'S

book No. FEE: \$0.00

TAMMY D. LAUER CLERK AND RECORDER

TO: FILED

BY:

Cross Index No. X-13 T. 36N R. 27W PMM

Adopted July 1, 1981, Montana Board of Professional Engineers & Land Surveyors

Sec. 34

● corner this sheet