

# INSTRUCTIONS

1. Original and/or subsequent record used to evaluate the corner position.
2. Description of evidence found, note discrepancies in the record, state method of establishing lost or obliterated corners.
3. Description of monument and accessories set to perpetuate the corner position.
4. Sketch or corner, show all pertinent data which can best be shown in a sketch example, corner marking, topography ties, position of accessories, etc.
5. Certification must be signed and sealed by Registered Land Surveyor in State of Montana.
6. Fill in Cross Index & Section Diagram at bottom of sheet.

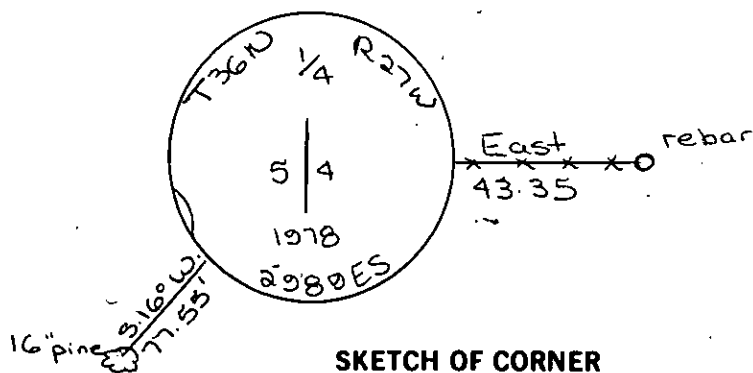
## CERTIFIED CORNER RECORDATION

Corner 1/4 corner between Secs. 4 & 5 T. 36N R. 27W P.M.M. Lincoln County

Record: Set a limestone 30x12x5 ins. 15 ins. in ground for 1/4 corner marked 1/4 from which a pine 9" diam bears N. 68° W. 1881 Ks. Dug pits for other R.Ms.

Found a loose stone fitting description near fence corner. Accepted fence corner - set brass cap at the fence corner and set stone alongside

See C. of S. No. 541 for adjacent corners



SKETCH OF CORNER

### CERTIFICATION

I, \_\_\_\_\_ certify the information shown herein is true and correct.

Signature Ground Party Chief

I, D.K. Macquardt

certify that this Corner Record correctly represents work performed by me or under by direction in compliance with the "Corner Recordation Act" (70-22-101, et seq., M.D.A.)

D.K. Macquardt  
Signature of Surveyor & Seal

Date: 7-6-81 Reg. No. 2289 ES

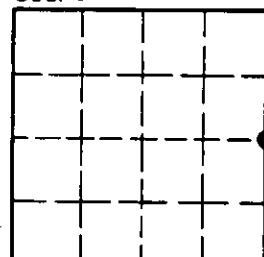
Employer: \_\_\_\_\_

Office of Clerk and Recorder, County of Lincoln. This "corner record" was filed for record on the 17th July day of 1981 was noted on the cross-index plat and is assigned page No. 1129 in book No. 1

Clarence L. Thompson, by Betty Lee,  
County Official Deputy

Cross Index No. C-9 T. 36N R. 27W P.M.M.

Sec. 5



• - corner this sheet