

CERTIFIED CORNER RECORDATION

Corner S29|S28
S32|S33 T 36 N. R. 27 W. P.M.M. LINCOLN County

I. 1893 Original Subdivision and Meanders by Peter M. Cardell and Abram L. Jaqueth: Set a stone and four bearing trees.

1969 B.L.M. Remonumentation by Roy G. Leedy: The cor. of secs. 28, 29, 32 and 33, monumented with a limestone, 14x10x5 ins., firmly set, mkd. 4 notches on the E., and 1 notch on S. edges, and witnessed by the remains of the original bearing trees.

A fir, 16 ins. diam, bears N58°E, 40 lks. dist., mkd. 36N 27W BT.

A fir, 16 ins. diam, bears S83°E, 30 lks. dist., mkd. with a rotted blaze.

A fir, 16 ins. diam, bears S62 1/2°W, 20 lks. dist., mkd. with a healed blaze.

A stump, bears N35 1/2°W, 14 lks. dist., with a fallen log mkd. S29 lying alongside. (Record: N30 1/2°W)

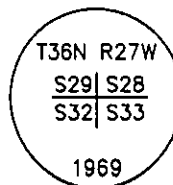
At the corner point, set an iron post, 30 ins. long, 2 1/2 ins. diam., 16 ins. in the ground, to bedrock, and in a mound of stone, 3 ft. diam. to top, with brass cap mkd.

from which

A fir, 7 ins. diam, bears N79°E, 7 lks. dist., mkd 1/4 S21 BT.

A larch, 9 ins. diam, bears S25°W, 45 lks. dist., mkd. 1/4 S20 BT.

bury the original stone alongside the iron post.



1995 Certified Corner Recordation by Ronald A. Pearson, MT Reg. No. 9008LS: Found the B.L.M. pipe and remains of 5 bearing trees. Establishes 3 new bearing trees.

A fir, 4 ins. diam, bears N81°E, 32.4 ft.. dist., mkd. "X" BT with snow blaze.

A larch, 3 ins. diam, bears S2°E, 22.6 ft.. dist., mkd. "X" BT with snow blaze.

A larch, 4 ins. diam, bears N82°W, 53.5 ft.. dist., mkd. "X" BT with snow blaze.

No trees available in Sec. 33

Painted red the scribed faces and 6 in. bands on the bearing trees. Attached Land Survey Monument and Bearing Tree signs. Set a 6 ft. galvanized steel guard post 3 ft. West, with Land Survey Monument and Property Boundary decals attached.

II. Found a 2 1/2 in. diam. iron pipe, 10 ins. above the ground, firmly set with a 3 1/4 in. diam. B.L.M. brass cap marked as shown below, and the remains of the 5 bearing trees from the Pearson recordation, from which:

A fir, 8 ins. diam, bears N81°E, 32.4 ft.. dist., mkd. with a healed face.

A larch sang, 3 ins. diam, bears S2°E, 22.6 ft.. dist., mkd. with a healed face.

A larch, 8 ins. diam, bears N82°W, 53.5 ft.. dist., mkd. with a healed face.

III. Establish 1 new bearing tree:

A fir, 5 ins. diam, bears S59°W, 15.8 ft. dist., mkd. T36N R27W S32 BT.

Painted red the scribed faces and 6 in. bands on the bearing trees. Attached Land Survey Monument and Bearing Tree signs.

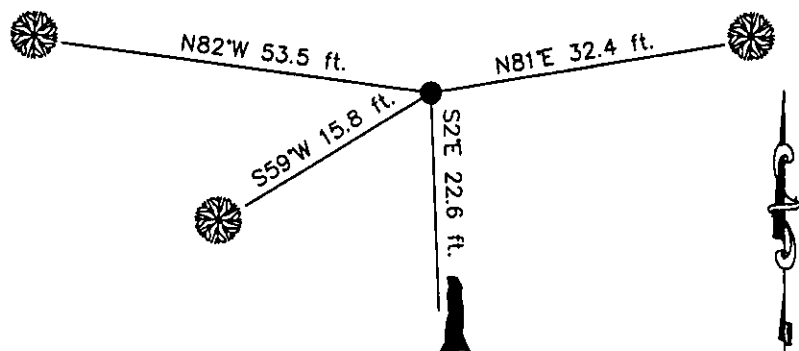
Date of Fieldwork: 7/16/2007

Survey crew: Steve Boyer, Tom Hommel

Magnetic declination: 20° East assumed

Equipment used: Hand compass and loggers tape

U.S. Forest Service, Supervisors Office, 1101 Hwy. 2 West, Libby, MT 59923 (406) 293-6211



SKETCH OF CORNER

NOT TO SCALE

CERTIFICATION

I, Thomas M. Hommel 10800LS
certify the information shown herein is true and correct.

Steven A. Boyer
certify that this Corner Record correctly represents work performed by me or under my direction in compliance with the "Corner Recordation Act" (70-22-131, et seq., M.C.A.)

Signature of Surveyor & Seal

Date: 12/20/2007 Reg. No. 9750LS

Employer: U. S. Forest Service

Office of Clerk and Recorder, County of Lincoln

208438 BOOK: CCR CC&R'S PAGE: 11171 Pages: 1

STATE OF MONTANA LINCOLN COUNTY

RECORDED: 01/03/2008 1:59 KOI: CC&R'S

TAMMY D. LAUER CLERK AND RECORDER

FEE: \$0.00

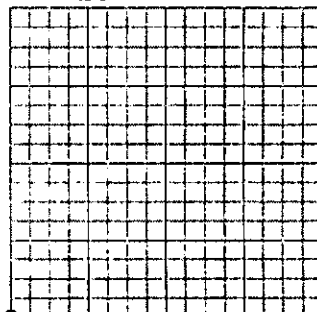
BY: Steve Blondelle, Deputy

TO: FILED

Cross Index No. V-9 T. 36N. R. 27W. P.M., MT

Adopted July 1, 1981, Montana Board of Professional Engineers & Land Surveyors

Sec. 28



• corner this sheet