

CERTIFIED CORNER RECORDATION

Corner E 1/16 S32 T 36 N. R. 27 W. P.M.M. LINCOLN County

I. 1995 Certified Corner Recordation by Ronald A. Pearson, MT Reg. No. 9008LS: At the calculated position shown on Certificate of Survey No. 2387, filed at Lincoln County Courthouse, Montana; set a 3/4 in. diam. by 30 ins. long aluminum rod, 24 ins. in the ground with a 3 1/4 in. diam. U.S.D.A. Forest Service aluminum cap, marked as shown. (see cap diagram below) from which

A larch, 7 ins. diam, bears N30°E, 11.7 ft.. dist., mkd. "X" BT.
A larch, 9 ins. diam, bears N72°W, 28.5 ft.. dist., mkd. E 1/16 S32 BT.

Painted red bands around the bearing trees. Attached Land Survey Monument and Bearing Tree signs. Set a 6 ft. galvanized steel guard post with Land Survey Monument and Property Boundary decals, North, 3.0 ft. Magnetic Declination: 20° East

II. Found a 3/4 in. diam. aluminum rod with 3 1/4 in. diam. aluminum cap marked as shown, 6 ins. above the ground, from which:

A larch, 7 ins. diam, bears N30°E, 11.7 ft.. dist., mkd. "X" BT.
A larch snag, 9 ins. diam, bears N72°W, 28.5 ft.. dist., mkd. E 1/16 S32 BT.

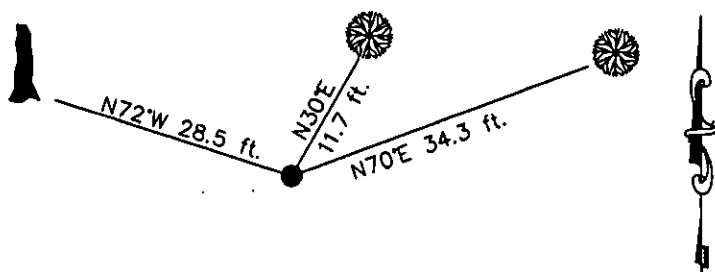


III. Establish 1 new bearing tree:

A fir, 14 ins. diam, bears N70°E, 34.3 ft. dist., mkd. E 1/16 S32 BT.

Painted red the scribed faces and 6 in. bands on the bearing trees. Attached Land Survey Monument and Bearing Tree signs.

Date of Fieldwork: 7/16/2007
Survey crew: Steve Boyer, Tom Hommel
Magnetic declination: 20° East assumed
Equipment used: Hand compass and loggers tape
U.S. Forest Service, Supervisors Office, 1101 Hwy. 2 West, Libby, MT 59923 (406) 293-6211



SKETCH OF CORNER

NOT TO SCALE.

CERTIFICATION

I, Thomas M. Hommel 10800LS
certify the information shown herein is true and correct.

Signature Ground Party Chief

Steven A. Boyer

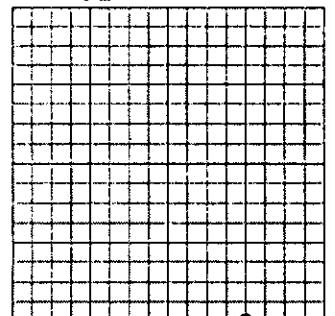
I, Steven A. Boyer,
certify that this Corner Record correctly represents work performed by me or under my direction in compliance with the "Corner Recordation Act" (70-22-101 et seq., M.C.A.)

Signature of Surveyor & Seal

Date: 12/20/2007 Reg. No. 10750LS

Employer: U. S. Forest Service

Sec. 32



Office of Clerk and Recorder, County of Lincoln

208437 BOOK: CCR CC&R'S PAGE: 11170 Pages: 1
STATE OF MONTANA LINCOLN COUNTY
RECORDED: 01/03/2008 1:58 KOI: CC&R'S
TAMMY D. LAUER CLERK AND RECORDER
FEE: \$0.00 BY: Lisa Blondall Deputy
TO: FILED

Cross Index No. Z-8 T. 36N. R. 27W. P.M., MT

Adopted July 1, 1981, Montana Board of Professional Engineers & Land Surveyors

● corner this sheet