

# CERTIFIED CORNER RECORDATION

Corner E 1/16  $\frac{S30}{S31}$  T. 36 N. R. 27 W. P.M.M. LINCOLN County

I. 1995 Certified Corner Recordation by Ronald A. Pearson, MT Reg. No. 9008LS: At the position shown by Certificate of Survey No. 2386 filed at Lincoln County Courthouse, Montana, set a 3/4 in. diam. by 30 ins. long aluminum rod, 26 ins. in the ground with a 3 1/4 in. diam. U.S.D.A. Forest Service aluminum cap marked as shown

from which:

A larch, 12 ins. diam, bears S49°E, 38.7 ft. dist., mkd. E 1/16 S31 BT.  
A fir, 11 ins. diam, bears S29°W, 10.9 ft. dist., mkd. E 1/16 S31 BT.

T36N R27W  
E 1/16  $\frac{S30}{S31}$   
9008LS  
1995

Painted red bands around the bearing trees and attached Land Survey Monument and Bearing Tree signs.

Set a 6 ft. galvanized steel guard post with Land Survey Marker and Property Boundary decals, North, 4 ft.

Magnetic Declination: 20° East

II. Found a 5/8 in. diam. aluminum rod, 3 ins. above the ground with a 3 1/4 in. diam. aluminum cap marked as shown above, from which:

A larch snag, 11 ins. diam, bears S49°E, 38.7 ft. dist., marked E 1/16 S31 BT.  
A fir, 10 ins. diam., bears S27°W, 10.9 ft. dist., marked with a pitched face.

III. Establish 1 new bearing tree:

A fir, 10 ins. diam, bears N79°W, 43.3 ft. dist., mkd. E 1/16 S30 BT.

Painted red the scribed faces and 6 in. bands on the bearing trees. Attached Land Survey Monument and Bearing Tree signs.

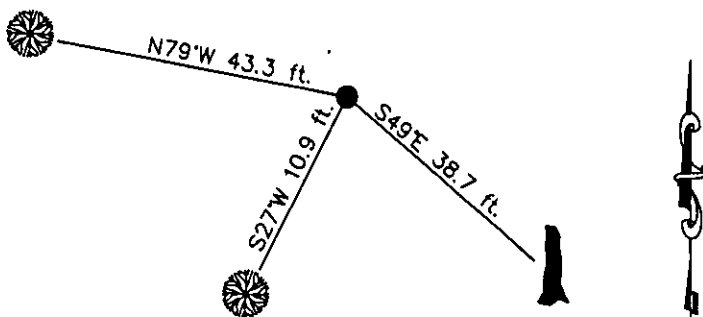
Date of Fieldwork: 7/17/2007

Survey crew: Steve Boyer, Tom Hommel

Magnetic declination: 20° East assumed

Equipment used: Hand compass and loggers tape

U.S. Forest Service, Supervisors Office, 1101 Hwy. 2 West, Libby, MT 59923 (406) 293-6211



SKETCH OF CORNER

NOT TO SCALE

## CERTIFICATION

Thomas M. Hommel 10800LS  
certify the information shown herein is true and correct.

Signature Ground Party Chief

Steven A. Boyer

certify that this Corner Record correctly represents work performed by me or under my direction in compliance with the "Corner Recordation Act" (70-22-101, M.C.A.)

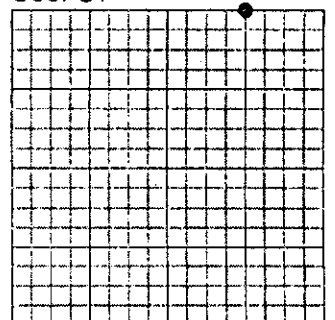
Signature of Surveyor & Seal 50LS

Date: 1/7/2008

Reg. No.

Employer: U. S. Forest Service

Sec. 31



Office of Clerk and Recorder, County of Lincoln

208436 BOOK: CCR CC&R'S PAGE: 11169 Pages: 1

STATE OF MONTANA LINCOLN COUNTY

RECORDED: 01/03/2008 1:57 KOI: CC&R'S

TAMMY D. LAUER CLERK AND RECORDER

FEE: \$0.00

BY Julie Blomdahl, Deputy

TO: FILED

Cross Index No. V-4 T. 36N. R. 27W. P.M., MT

Adopted July 1, 1981, Montana Board of Professional Engineers & Land Surveyors

• corner this sheet