

CERTIFIED CORNER RECORDATION

Corner South 1/4 Sec. 33 T. 36 N. R. 27 W. P.M.M. LINCOLN County

I. Record: 1893, Original Township Survey of Boundary Lines, T.36N., R27W. by Peter McCardell and Abram L. Jaqueth. "Set a limestone, 14x10x4 ins. 10 ins. in the ground, for 1/4 Sec. Cor. Marked 1/4 on N. face, from which

- A fir, 6 ins. diam., bears S27°W, 91 lks. dist. marked 1/4 S. B.T.
- A fir, 6 ins. diam., bears N48°30'W, 48 lks. dist. marked 1/4 S. B.T."

II. Found: A limestone, 19x7x3 ins., laying on the ground marked 1/4 on face - hole for stone is still visible and distinct, from which

- A root crown with fir bark, bears S27°W, 60.0 ft. (91 lks.) dist., no visible scribe
- A root crown with fir bark, bears N48°W, 31.7 ft. (48 lks.) dist., no visible scribe

III. Maintenance: Set in the original found stone hole, a 2 1/2 ins. diam. x 30 ins. aluminum pipe, 6 ins. above ground with 3 1/4 ins. diam. aluminum cap marked as shown:



from which:

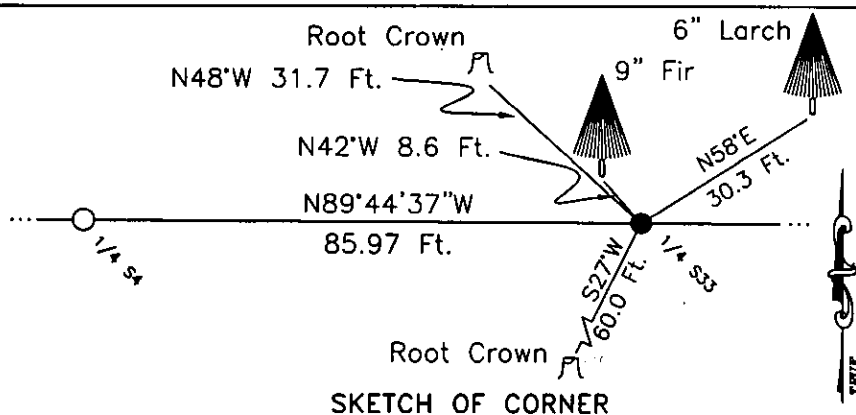
- A larch, 6 ins. diam., bears N58°E, 30.3 ft. dist., marked X-BT.
- A douglas fir, 9 ins. diam., bears N42°W, 8.6 ft. dist., marked 1/4 S33 BT.

Attached Bearing Tree signs and painted a 1 ft. red band around each tree.

Buried original stone alongside and raise a small mound of stone around pipe.

Magnetic declination: 20° East assumed. Equipment used: Hand compass and loggers.

Kootenai Surveyors Inc., 314 California Av., Libby, MT. 59923 (406) 293-4354



SKETCH OF CORNER

CERTIFICATION

I, Gary C. Crismon
certify the information shown herein is true and correct.
Gary C. Crismon
Signature Ground Party Chief

I, Alvah F. Hughes
certify that this Corner Record correctly represents work performed by me or under my direction in compliance with the "Corner Recordation Act" (70-22-101, et seq. M.C.A.)
Alvah F. Hughes
Signature of Surveyor & Seal

Date: 02/20/03 Reg. No. 7322-LS
Employer: Kootenai Surveyors Inc.

Office of Clerk and Recorder, County of Lincoln. This "corner

record" was filed for record on MAR 14, 2003

was noted on the cross-index plat and is assigned page No. 10606, in book No. Coral M. Cummy

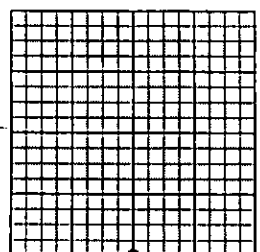
County Official

Da #166047

Cross Index No. Z-11 T. 36N. R. 27W. P.M., MT

Adopted July 1, 1981, Montana Board of Professional Engineers & Land Surveyors

Sec. 33



• corner this sheet