

CERTIFIED CORNER RECORD

Corner W 1/16 ²³ 26 T. 36 N., R. 27 W., P.M.M. Lincoln County

Record :

1973 Certificate of Survey No. 1 by Sorenson & Company No. 2345 ES. No monument set per this survey.

1998 Retracement survey by Davis Surveying, Inc., on record at Lincoln County Court-house, Libby, MT.

Found Evidence :

No monuments found during field search of the area.

Perpetuation :

At the computed position, set a 5/8 inch diam. steel rebar 18 ins. long, 16 ins. in the ground, with a 1 1/4 inch diam. yellow P.V.C. cap stamped: KED 4975-S, from which:

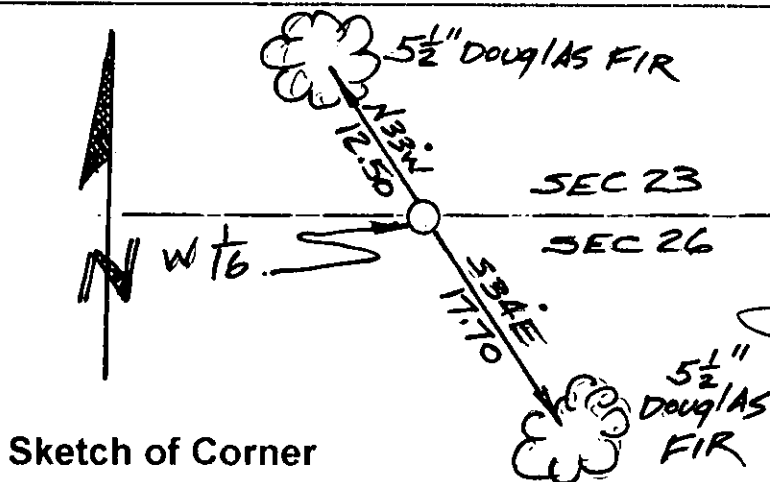
A Douglas Fir, 5 1/2 ins. diam. bears N 33° W, 12.50 feet dist., scribed (W 1/16 S23 BT).
A Douglas Fir, 5 1/2 ins. diam. bears S 34° E, 17.70 feet dist., scribed (W 1/16 S26 BT).

Painted 6 in. wide bands and scribed faces red on Bearing Trees.

Attached Bearing Tree tags to both trees.



Magnetic Declination: 18° East



Sketch of Corner

CERTIFICATION

I, John Damon

certify the information shown herein is true and correct

John Damon
Signature of Ground Party Chief

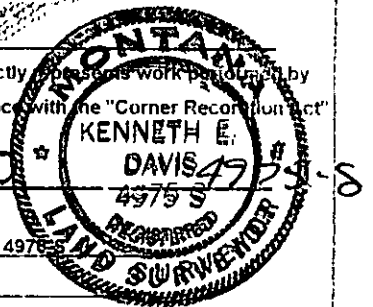
I, Kenneth E. Davis

certify that this Corner Record correctly represents work performed by me or under my direction in compliance with the "Corner Recordation Act" (70-22-101, et seq., M.C.A.)

Kenneth E. Davis
Signature of Surveyor & Seal

Date: 11-5-98 Reg. No. 4975-S

Employer: Davis Surveying, Inc.



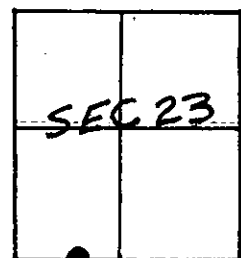
Section

Office of Clerk and Recorder, County of Lincoln

This "corner record" was filed for record on 12-18-98

was noted on the cross-index plat and is assigned page No. 10276

in book No. Coral M. Cummins by PCB
County Official



Cross Index No. W 1/16 ²³ 26 T. 36 N., R. 27 W., PMM

• THIS CORNER