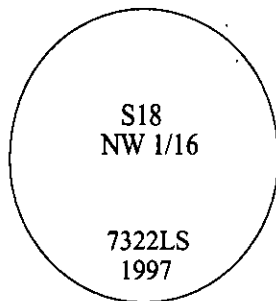


CERTIFIED CORNER RECORDATION

Corner NW 1/16 Sec. 18 T. 36N R. 27W P.M., MT Lincoln County

- I. No previous history.
- II. No evidence found.
- III. Set by survey, a 3/4 in. diam. x 30 ins. long aluminum rod, 24 ins. in the ground, with a 3 1/4 in. diam. aluminum cap, mkd. as shown.

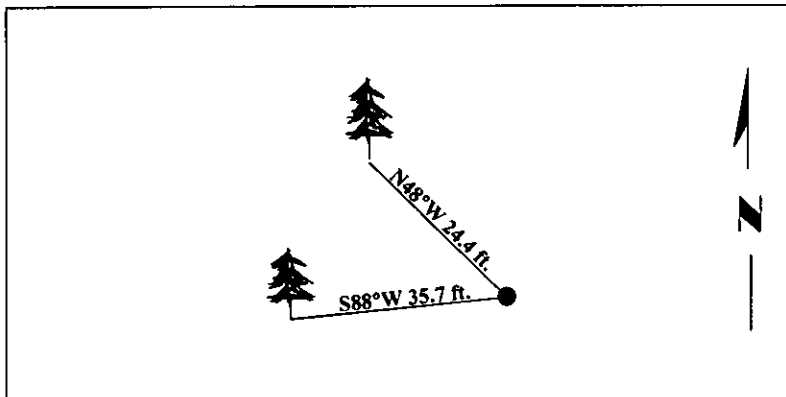


Established two bearing trees:

- A larch, 7 ins. diam., bears S88°W, 35.7 ft. dist., mkd. "X" "BT".
- A larch, 10 ins. diam., bears N48°W, 24.4 ft. dist., mkd. "NW 1/16 S18 BT".

Painted bearing trees and attached Land Survey Monument and Bearing Tree signs.

Magnetic Declination: 20° East.



SKETCH OF CORNER

CERTIFICATION	
I, <u>Mark Federman</u>	certify the information shown herein is true and correct.
I, <u>Alvah F. Hughes</u>	certify that this Corner Record correctly represents work performed by me or under my direction in compliance with the "Corner Recordation Act", (70-22-101, et seq., M.C.A.)
Date: <u>09/24/97</u>	Signature of Surveyor / Sec. 18
Reg. No.: <u>7322LS</u>	
Employer: <u>U.S. FOREST SERVICE</u>	

Office of Clerk and Recorder, County of Lincoln. This "corner record" was filed for record on 12-26-97 was noted on the cross-index plat and is assigned page No. 10006 in book No. _____

Coral M. Cunningham
County Official

