

INSTRUCTIONS

1. Original and/or subsequent record used to evaluate the corner position.
2. Description of evidence found, note discrepancies in the record, state method of establishing lost or obliterated corners.
3. Description of monument and accessories set to perpetuate the corner position.
4. Sketch of corner, show all pertinent data which can best be shown in a sketch example, corner marking, topography lies, position of accessories, etc.
5. Certification must be signed and sealed by Land Surveyor registered in the State of Montana.
6. Fill in Cross Index & Section Diagram at bottom of sheet.

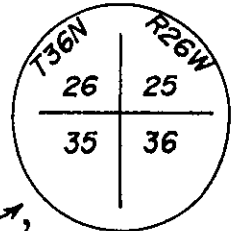
CERTIFIED CORNER RECORDATION

Corner N.E. Section Corner (SEC. 35) T. 36N. R. 26W. P.M.M. LINCOLN County

RECORD: from GLO Book 2841, page 2:

Set a lime stone 14" x 10" x 9", 10" in the ground, from which:

- a 14" larch bears N62°E 74 lks. (48.8')
- a 16" larch bears S07°E 17 lks. (11.2')
- a 14" larch bears S71°W 39 lks. (25.7')
- a 15" fir bears N31°W 21 lks. (13.9')
- a 20" larch, line tree, bears South 45.5'



FOUND: 2" Brass Cap on a 1" pipe in mound of stone marked ↗, from which:

G.L.O. evidence:

a 14" stump 2.4' high with scribing visible, and U.S.F.S.

Location Poster attached marked "M.C. & S.F. 10/13/55" bears S12°E 15.9'

a 17" stump 3.9' high with scribing visible bears S61°W 26.1'

an old fallen, blown over fir stump 10' long bears N20°W 11' to center of root hole

a 23" stump 2.5' high bears South 49.5'

Other evidence:

a 21" fir with very old face blaze visible bears N75°E 44.5'

a 14" lodgepole with old face blaze with tack & brass disc

stamped "1834 S" in face blaze bears N60°W 28.0'

a U.S.F.S. Location Poster marked "8/4/55 REED" and attached to a corner fence post 2.4' East and 1.5' South of the brass cap

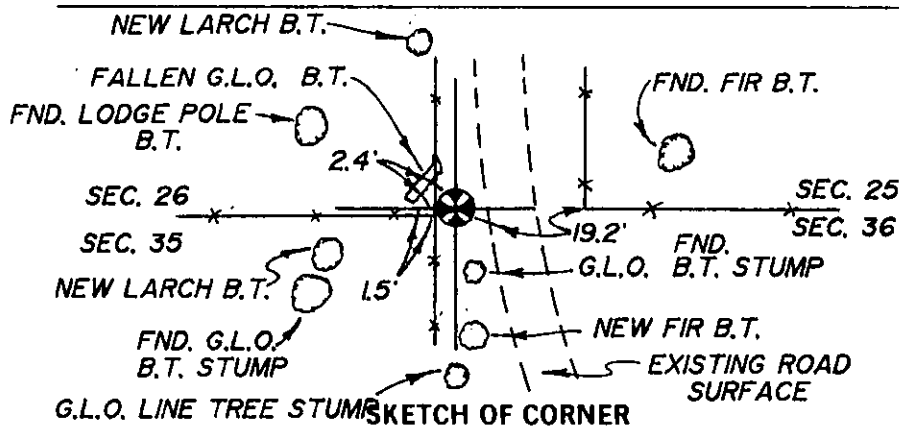
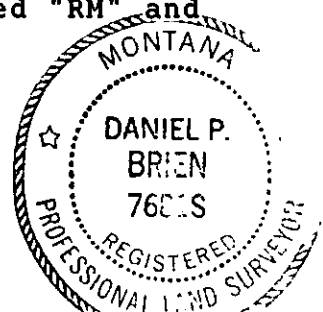
SET: 3 new bearing trees from found 2" brass cap:

a 11" fir bears S07°E 30.6' blazed and scribed "RM" and painted blaze red

a 10" larch bears S72°W 22.7' blazed and scribed "RM" and painted blaze red

a 10" larch bears N12°W 33.8' blazed and scribed "RM" and painted blaze red

Used a SILVA hand compass (declination 19°E)



CERTIFICATION

I, Daniel P. Brien

certify the information shown herein is true and correct.

Signature Ground Party Chief

I, Daniel P. Brien

certify that this Corner Record correctly represents work performed by me or under my direction in compliance with the "Corner Recordation Act" (70-22-101, et seq., M.C.A.)

Signature of Surveyor & Seal

Date: 1/26/93 Reg. No. 7681 S

Employer: HERSMAN LAND SURVEY

Office of Clerk and Recorder, County of Lincoln. This "corner

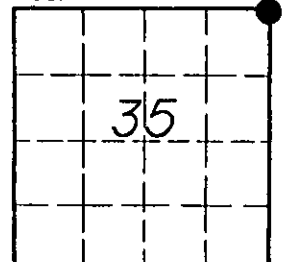
record" was filed for record on Feb 3, 1993

was noted on the cross-index plat and is assigned page No. 5335, in

book No. _____

Coral M. Cummings by DB
County Official

Sec. 35



Cross Index No. V 21 T. 36N. R. 26W. P.M.M.

• - corner this sheet