

CERTIFIED LAND CORNER RECORDATION --

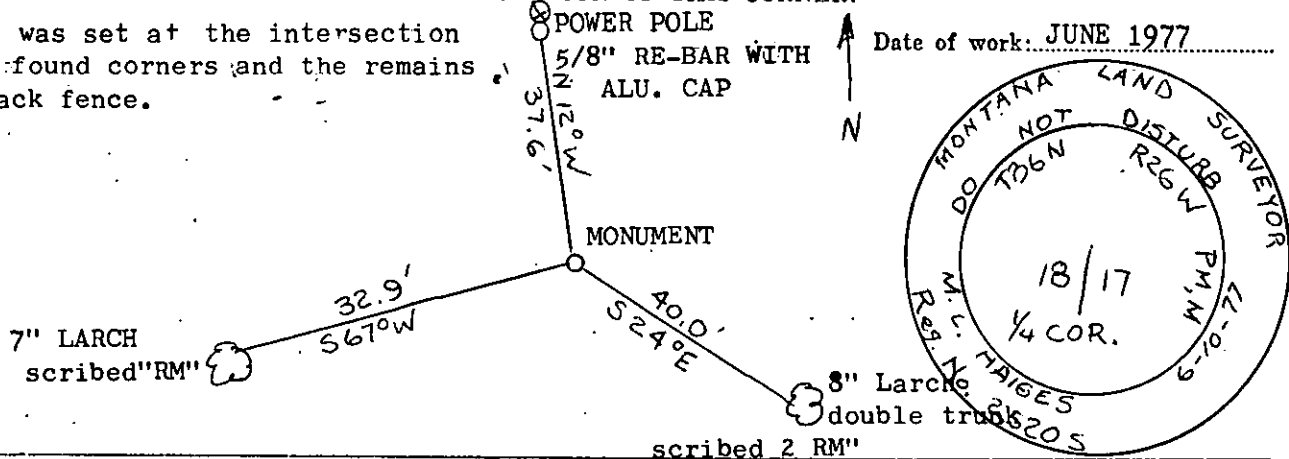
DESCRIPTION OF CORNER EVIDENCE FOUND, AND ORIGINAL RECORD (IF KNOWN)

ORIGINAL G.L.O. NOTES: "Set a post 3 ft. long, 3 ins. square, 24 ins. in the ground for $\frac{1}{4}$ sec. cor marked $\frac{1}{4}$ S on W. face, from which
 A tamarack 12 ins. diam. bears N36°E 87 lks. dist marked 1-4S. B.T.
 A tamarack 10 ins. diam. bears S61°W 26 lks. dist. marked 1-4S. B.T."

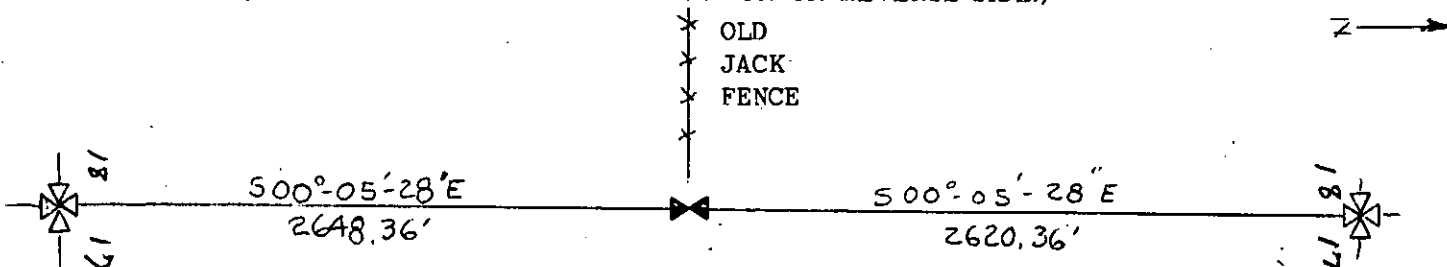
FOUND: NO ORIGINAL EVIDENCE FOUND

DESCRIPTION OF MONUMENT AND ACCESSORIES ESTABLISHED TO PERPETUATE THE ORIGINAL LOCATION OF THIS CORNER:

This corner was set at the intersection between two found corners and the remains of an old jack fence.



SKETCH, WITH COURSE AND DISTANCE TO ADJACENT CORNERS IF DETERMINED IN THIS SURVEY. (MAY SKETCH OR PASTE REPRODUCTION ON REVERSE SIDE.)



Surveyor's Seal

I, JAMES BURTON
 certify that the information shown herein is true and correct.

James Burton
 Signature of Ground Party Chief

I, M. L. HAIGES
 certify that I have carefully performed or reviewed the work done on the diagrammed corner as reported on this recordation form and approve the same.

M. L. Haiges
 Signature of Surveyor

DIAGRAM OF CORNER:
 T36N R26W

N.

18 X 17

E. $\frac{1}{4}$ COR. SEC. 18

X = Corner recorded on the sheet

2520 S
 Registration Number

Office of Clerk and Recorder, County of Lincoln
 "corner record" was filed for record on the 13th day of April, 1978, was noted on the cross-index plat and is

signed page No. 522, in book No. 1

Eleanor L. Taugher, by Betty Bell,
 County Official Deputy

Cross Index No. L-5 T. 36 R. 26 Mbr.