

INSTRUCTIONS

1. Original and/or subsequent record used to evaluate the corner position.
2. Description of evidence found, note discrepancies in the record, state method of establishing lost or obliterated corners.
3. Description of monument and accessories set to perpetuate the corner position.
4. Sketch of corner, show all pertinent data which can best be shown in a sketch example, corner marking, topography ties, position of accessories, etc.
5. Certification must be signed and sealed by Land Surveyor registered in the State of Montana.
6. Fill in Cross Index & Section Diagram at bottom of sheet.

CERTIFIED CORNER RECORDATION

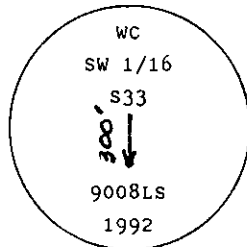
Corner SW 1/16 OF S33 T. 36 N. R. 26 W. P.M.M. Lincoln County

I. No previous record.

II. No evidence found.

III. The calculated corner position falls in the Tobacco River, therefore I established two witness corners.

At a point $N0^{\circ}-04'-37''E$, 300.00 ft. dist., set a $3/4$ in. diam., 30 ins. long, alum. rod 24 ins. in the ground with alum. cap mkd. as shown.

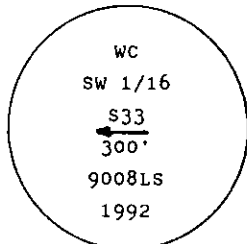


From which

A pine, 16 ins. diam., bears $N70^{\circ}E$, 43.3 ft. dist., mkd. WC SW 1/16 S33 BT.

A pine, 18 ins. diam., bears $S51^{\circ}E$, 38.0 ft. dist., mkd. WC SW 1/16 S33 BT.

At a point $S89^{\circ}-13'-16''E$, 300.00 ft. dist., set a $3/4$ in. diam., 30 ins. long, alum. rod 24 ins. in the ground with alum. cap mkd. as shown.



From which

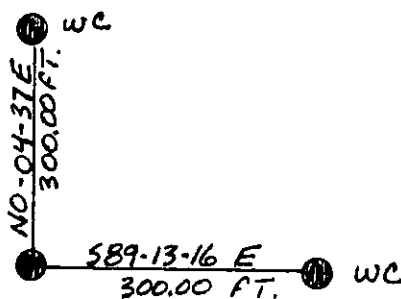
A pine, 24 ins. diam., bears $N67^{\circ}E$, 50.5 ft. dist., mkd. XBT on a 4 ft. high blaze.

A fir, 23 ins. diam., bears $N22^{\circ}W$, 111.5 ft. dist., mkd. WC SW 1/16 S33 BT.

Painted red bands around the bearing trees and attached Land Survey Monument and Bearing Tree signs.

Set a 6 ft. galvanized steel guard post with Land Survey Marker and Property Boundary decals, 3 ft. dist.

Magnetic Declination: 20° East



SKETCH OF CORNER

CERTIFICATION

I, Ronald A. Pearson, certify the information shown herein is true and correct.

Signature Ground Party Chief

Ronald A. Pearson

I, Ronald A. Pearson, certify that this Corner Record correctly represents work performed by me or under my direction in compliance with the "Corner Recordation Act" (70-22-101, et seq., M.C.A.)

Signature of Surveyor & Seal

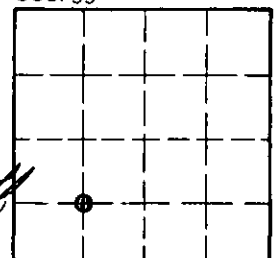
Date: 10/1/92 Reg. No. 9008 LS

Employer: U.S. FOREST SERVICE

Office of Clerk and Recorder, County of Lincoln. This "corner record" was filed for record on 12-8-92 was noted on the cross-index plat and is assigned page No. 5129, in book No. Coral M. Cummings by Bill Buehler

County Official

Sec. 33



• - corner this sheet

Y-10 36 N 26 W
Cross Index No. T. R. PMM