

## INSTRUCTIONS

1. Original and/or subsequent record used to evaluate the corner position.
2. Description of evidence found, note discrepancies in the record, state method of establishing lost or obliterated corners.
3. Description of monument and accessories set to perpetuate the corner position.
4. Sketch of corner, show all pertinent data which can best be shown in a sketch example, corner marking, topography ties, position of accessories, etc.
5. Certification must be signed and sealed by Land Surveyor registered in the State of Montana.
6. Fill in Cross Index & Section Diagram at bottom of sheet.

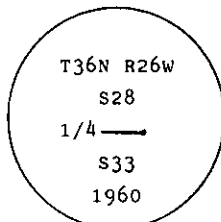
## CERTIFIED CORNER RECORDATION

Corner N 1/4 of S33 T. 36 N. R. 26 W. Lincoln County

I. 1894 G.L.O. record by A. Jaqueth et al: Set a post and two bearing trees.

1960 BLM remonumentation: The 1/4 sec. cor. of secs. 28 and 33, as determined from the remains of the original bearing trees.

At the corner point, set an iron post, 30 ins. long, 2 1/2 ins. diam., 28 ins. in the ground, in concrete with brass cap mkd.



From which the remains of the original bearing trees:

- A dead larch, 14 ins. diam., bears N37° E, 23 lks. (15.18 ft.) dist., mkd. 1/4 S BT. (Record)
- A stump, 20 ins. diam., bears S7° E, 28 lks. (18.48 ft.) dist., visible marks BT.

The new bearing trees:

- A fir, 6 ins. diam., bears S30° E, 29 lks. (19.14 ft.) dist., mkd. 1/4 S33 BT.
- A fir, 13 ins. diam., bears N25° W, 53 lks. (34.98 ft.) dist., mkd. 1/4 S28 BT.

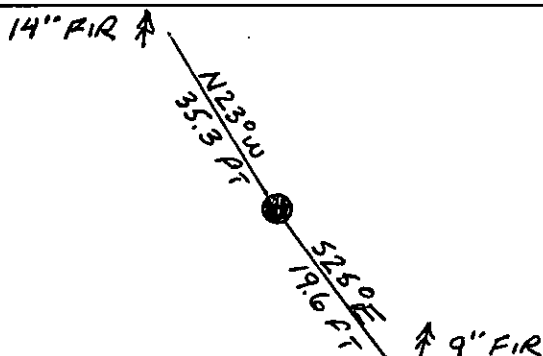
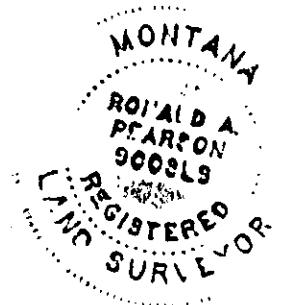
II. Found a 2 1/2 ins. diam. pipe, 2 ins. out of the ground, with BLM brass cap mkd. as shown, from which

- A fallen tree, 14 ins. diam., bears N37° E, 15.1 ft. dist.
- A fir, 9 ins. diam., bears S25° E, 19.6 ft. dist., healed face.
- A stump, 20 ins. diam., bears S4° E, 18.1 ft. dist., visible scribing BT.
- A fir, 14 ins. diam., bears N23° W, 35.3 ft. dist., healed face.

III. Painted red bands around the bearing trees and attached Land Survey Monument and Bearing Tree signs.

Set a 6 ft. galvanized steel guard post with Land Survey Marker decal, East, 3 ft.

Magnetic Declination: 20° East



SKETCH OF CORNER

## CERTIFICATION

I, Kevin A. Todd  
certify the information shown herein is true and correct.

Kevin A. Todd  
Signature Ground Party Chief

I, Ronald A. Pearson  
certify that this Corner Record correctly represents work performed by me or under my direction in compliance with the "Corner Recordation Act" (70-22-101, et seq., M.C.A.)

Ronald A. Pearson  
Signature of Surveyor & Seal

Date: 10/1/92 Reg. No. 9008 LS

Employer: U. S. FOREST SERVICE

Office of Clerk and Recorder, County of Lincoln. This "corner

record" was filed for record on 10-7-92

was noted on the cross-index plat and is assigned page No. 5120, in

book No. \_\_\_\_\_

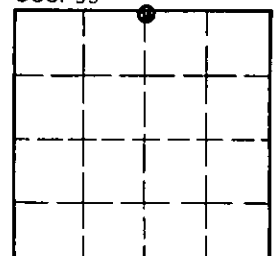
Coral M. Cummings  
County Official

V-11

36 N 26 W

Cross Index No. \_\_\_\_\_ T. \_\_\_\_\_ R. \_\_\_\_\_ PMM

Sec. 33



• - corner this sheet