

## INSTRUCTIONS

1. Original and/or subsequent record used to evaluate the corner position.
2. Description of evidence found, note discrepancies in the record, state method of establishing lost or obliterated corners.
3. Description of monument and accessories set to perpetuate the corner position.
4. Sketch of corner, show all pertinent data which can best be shown in a sketch example, corner marking, topography ties, position of accessories, etc.
5. Certification must be signed and sealed by Land Surveyor registered in the State of Montana.
6. Fill in Cross Index & Section Diagram at bottom of sheet.

## CERTIFIED CORNER RECORDATION

Corner NW Sec. Cor. of S33 T. 36 N. R. 26 W. P.M.M. Lincoln County

- I. 1893 G.L.O. record by A. Jaqueth et al: Set a post and four bearing trees.

1975 Corner recordation by D.K.Marquardt: Found "Mound of rock and old wood post with old bearing tree poster nailed to it, on remains of old fence line.

A pine stump bears N61°W, 66.59 ft. (Record: N61°15'W, 101 lks(66.66 ft)).

Set a 1 3/4" x 30" iron pipe with brass cap."

A pine, 20 ins. diam., bears N10°E, 56.58 ft.

A pine, 10 ins. diam., bears S50°E, 85.23 ft.

- II. Found a 2 ins. diam. pipe, 7 ins. out of the ground, with brass cap mkd. as shown.



From which

A pine stump, 26 ins. diam., bears N10°E, 56.6 ft. dist.

A pine, 17 ins. diam., bears S50°E, 85.3 ft. dist., no visible face.

A burnt root crown, bears N61°W, 66.7 ft. dist.

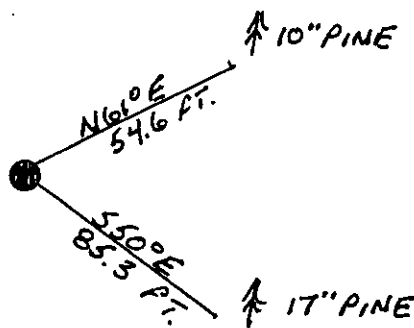
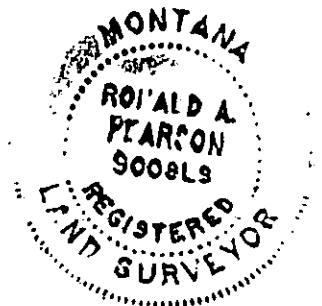
- III. Established one new bearing tree

A pine, 10 ins. diam., bears N61°E, 54.6 ft. dist., mkd. T36N R26W S28 BT.

Painted red bands around the bearing trees and attached Land Survey Monument and Bearing Tree signs.

Set a 6 ft. galvanized steel guard post with Land Survey Marker decal, North, 3 ft.

Magnetic Declination: 20° East



SKETCH OF CORNER

## CERTIFICATION

- I. Kevin A. Todd  
certify the information shown herein is true and correct.

Kevin A. Todd  
Signature Ground Party Chief

- I. Ronald A. Pearson  
certify that this Corner Record correctly represents work performed by me or under my direction in compliance with the "Corner Recordation Act" (70-22-101, et seq., M.C.A.)

Ronald A. Pearson  
Signature of Surveyor & Seal

Date: 10/1/92 Reg. No. 9008 LS

Employer: U. S. FOREST SERVICE

Office of Clerk and Recorder, County of Lincoln. This "corner record" was filed for record on 12-7-92 was noted on the cross-index plat and is assigned page No. 549, in book No. Coral M. Cummings

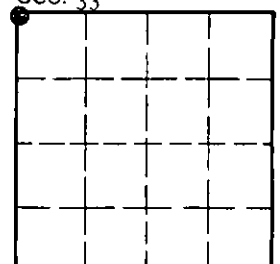
County Official

V-9

36 N 26 W

Cross Index No. \_\_\_\_\_ T. \_\_\_\_\_ R. \_\_\_\_\_ PMM

Sec. 33



• - corner this sheet