

INSTRUCTIONS

1. Original and/or subsequent record used to evaluate the corner position.
2. Description of evidence found, note discrepancies in the record, state method of establishing lost or obliterated corners.
3. Description of monument and accessories set to perpetuate the corner position.
4. Sketch of corner, show all pertinent data which can best be shown in a sketch example, corner marking, topography ties, position of accessories, etc.
5. Certification must be signed and sealed by Land Surveyor registered in the State of Montana.
6. Fill in Cross Index & Section Diagram at bottom of sheet.

CERTIFIED CORNER RECORDATION

Corner S 1/4 of S32 T. 36 N. R. 26 W. P.M.M. Lincoln County

I. 1893 G.L.O. record by A. Jaqueth et al: Tree corner and two bearing trees.

1959 BLM record: The 1/4 sec. cor. of secs. 5 and 32, on the S. bdy. of the Tp., monumented with a fir tree, 17 ins. diam., mkd. with an overgrown blaze, and witnessed by the remains of the original bearing trees. Not remonumented.

From which the remains of the original bearing trees:

A fir, 19 ins. diam., bears S25° W, 16 lks. (10.56 ft.) dist., mkd. 1/4 S BT. (Record)

A dead fir, 16 ins. diam., bears N45° W, 40 lks. (26.40 ft.) dist., mkd. 1/4 S BT. (Record)

The new bearing trees:

A fir, 6 ins. diam., bears S15 1/4° E, 31 lks. (20.46 ft.) dist., mkd. 1/4 S5 BT.

A fir, 9 ins. diam., bears N47° W, 71 lks. (46.86 ft.) dist., mkd. 1/4 S32 BT.

II. Found a dead fir, 18 ins. diam., mkd. with an overgrown blaze on the NE face. From which:

A root crown, bears N40° W, 26.6 ft. dist.

A fir, 10 ins. diam., bears S15° E, 20.6 ft. dist., healed face.

A fallen tree, 19 ins. diam., bears S26° W, 10.5 ft. dist., visible scribing.

A fir, 15 ins. diam., bears N47° W, 46.8 ft. dist., healed face.

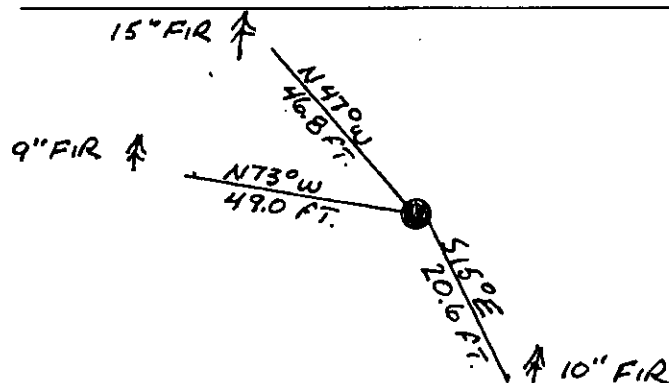
III. Established one new bearing tree:

A fir, 9 ins. diam., bears N73° W, 49.0 ft. dist., mkd. 1/4 S32 BT.

Painted red bands around the bearing trees and attached Land Survey Monument and Bearing Tree signs.

Set a 6 ft. galvanized steel guard post with Land Survey Marker decal, South, 3 ft.

Magnetic Declination: 20° East



SKETCH OF CORNER

CERTIFICATION

I, Kevin A. Todd
certify the information shown herein is true and correct.

Kevin A. Todd
Signature Ground Party Chief

I, Ronald A. Pearson
certify that this Corner Record correctly represents work performed by me or under my direction in compliance with the "Corner Recordation Act" (70-22-101, et seq., M.C.A.)

Ronald A. Pearson
Signature of Surveyor & Seal

Date: 10/1/92 Reg. No. 9008 LS

Employer: U.S. FOREST SERVICE

Office of Clerk and Recorder, County of Lincoln. This "corner record" was filed for record on 12-7-92 was noted on the cross-index plat and is assigned page No. 5112, in book No. Coral M. Cummings

County Official

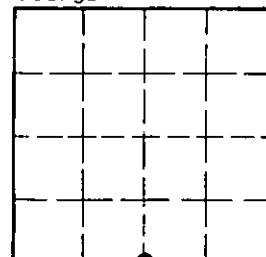
Z-7

36 N

26 W

Cross Index No. T. R. PMM

Sec. 32



• - corner this sheet