

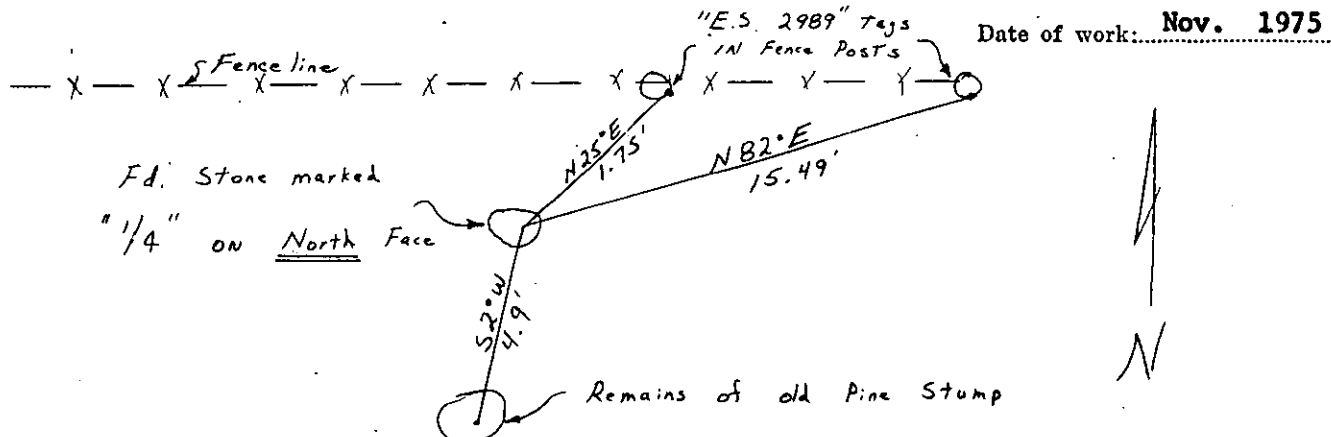
CERTIFIED LAND CORNER RECORDATION

DESCRIPTION OF CORNER EVIDENCE FOUND, AND ORIGINAL RECORD (IF KNOWN)

G.L.O. Record: Set a limestone with 1/4 marked on West face from which:
 A 38" Pine bears S 5° 30' E 7 links
 A 30" Pine bears N 60° W 107 links

Found: Stone firmly set, marked "1/4" on North face. Remains of old Pine stump S2°W 4.9' (7.4 links) from stone. Accept stone as corner.

DESCRIPTION OF MONUMENT AND ACCESSORIES ESTABLISHED TO PERPETUATE THE ORIGINAL LOCATION OF THIS CORNER:



SKETCH, WITH COURSE AND DISTANCE TO ADJACENT CORNERS IF DETERMINED IN THIS SURVEY. (MAY SKETCH OR PASTE REPRODUCTION ON REVERSE SIDE.)

See Certificate of Survey Number 152

Surveyor's Seal

S. R. Smith

I, _____
 certify that the information shown herein is true and correct.

S. R. Smith

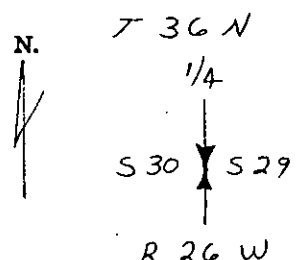
Signature of Ground Party Chief

I, **Dean K. Marquardt**
 certify that I have carefully performed or reviewed the work done on the diagrammed corner as reported on this recordation form and approve the same.

Dean K. Marquardt

Signature of Surveyor

DIAGRAM OF CORNER:



= Corner recorded on the sheet

ES2989
 Registration Number

Office of Clerk and Recorder, County of *Lincoln*

This "corner record" was filed for record on the *28th* day of *January*, 19*76*, was noted on the cross-index plat and is assigned page No. *428*, in book No. *1*

Eleanor L. Vaughn
 County Official