

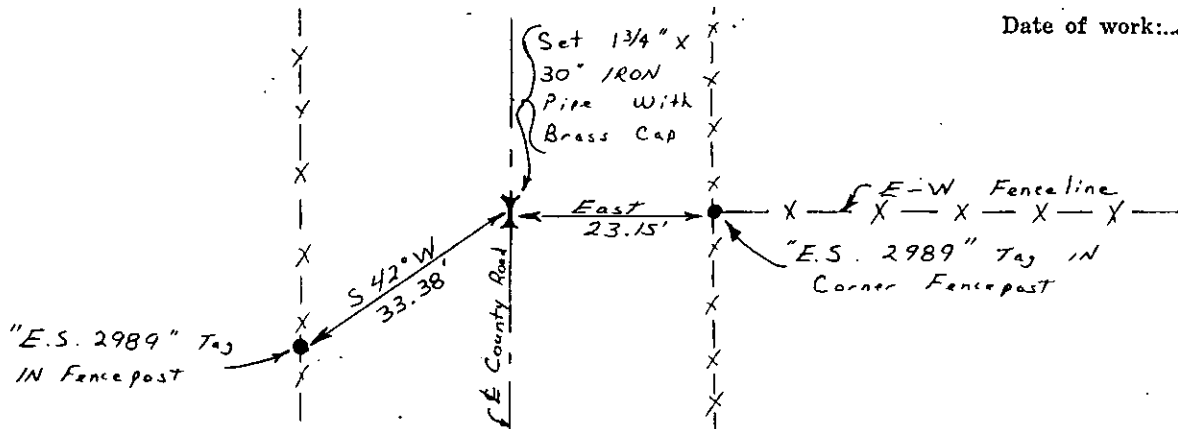
# CERTIFIED LAND CORNER RECORDATION

## DESCRIPTION OF CORNER EVIDENCE FOUND, AND ORIGINAL RECORD (IF KNOWN)

G.L.O. Record: Set a post 3 ft. long, 3 in. square, with marked stone, 12 in. the ground. Dug pits North and South.

Found.: A county road has destroyed all evidence of G.L.O. Record. Using the county road to establish the Easting and an E-W fenceline to establish the Northing, we set a brass cap for the 1/4 corner. Having done extensive work in this area, we find that this location very closely agrees with found angular and linear relationships. (See Certificate of survey No. 152)

## DESCRIPTION OF MONUMENT AND ACCESSORIES ESTABLISHED TO PERPETUATE THE ORIGINAL LOCATION OF THIS CORNER:



SKETCH, WITH COURSE AND DISTANCE TO ADJACENT CORNERS IF DETERMINED IN THIS SURVEY. (MAY SKETCH OR PASTE REPRODUCTION ON REVERSE SIDE.)

See Certificate of Survey Number 152

Surveyor's Seal

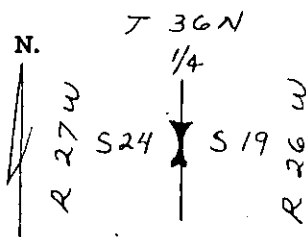
I, S.R. Smith  
certify that the information shown herein is true and correct.

S.R. Smith  
Signature of Ground Party Chief

I, Dean K. Marquardt  
certify that I have carefully performed or reviewed the work done on the diagrammed corner as reported on this recordation form and approve the same.

Dean K. Marquardt  
Signature of Surveyor

## DIAGRAM OF CORNER:



ES2989  
Registration Number

Office of Clerk and Recorder, County of Lincoln  
This "corner record" was filed for record on the 28th day of January, 1976, was noted on the cross-index plat and is assigned page No. 427, in book No. 1

Edmond L. Vaughn Mrs. Watson  
County Official Dep.

Cross Index No. P-1 T. 36 N R. 26 W Mer.