

CERTIFIED LAND CORNER RECORDATION

DESCRIPTION OF CORNER EVIDENCE FOUND, AND ORIGINAL RECORD (IF KNOWN)

Record: Set a post, from which:

A 10" Tamarack bears S30°E 22 links

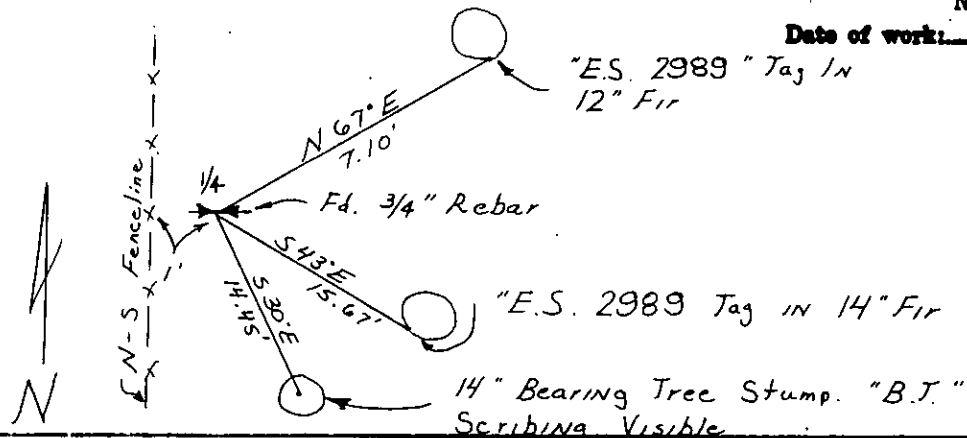
A 12" Tamarack bears N73°W 38 links

Found: Rebar 1' East of fenceline and bearing tree stump in SE Quadrant.
Rebar found to be in the proper location for the 1/4 corner.

**DESCRIPTION OF MONUMENT AND ACCESSORIES ESTABLISHED
TO PERPETUATE THE ORIGINAL LOCATION OF THIS CORNER:**

Nov. 1975

Date of work:



SKETCH, WITH COURSE AND DISTANCE TO ADJACENT CORNERS IF DETERMINED IN THIS SURVEY.
(MAY SKETCH OR PASTE REPRODUCTION ON REVERSE SIDE.)

See Certificate of Survey Number 152

Surveyor's Seal

I, S.R. Smith
 certify that the information shown herein is true and
 correct.

S. R. Smith
Signature of Ground Party Chief

I, Dean K. Marquardt
certify that I have carefully performed or reviewed the
work done on the diagrammed corner as reported on this
recording form and approve the same.

Dean K. Margenau
Signature of Surveyor

DIAGRAM OF CORNER:

N. T 36 N
S 18
S 19
R 26 W

⇒ Corner recorded on the sheet

E. S. 2989
Registration Number

Office of Clerk and Recorder, County of Lincoln
This "corner record" was filed for record on the 28th day of January 1976 was noted on the cross-index plat and is assigned page No. 425 in book No. 1
Elmer L. Tauscher, Mac Watson

FORM 125-41605

Cross Index No. N-3 T. 36N R. 26W Mer.