

CERTIFIED LAND CORNER RECORDATION

DESCRIPTION OF CORNER EVIDENCE FOUND, AND ORIGINAL RECORD (IF KNOWN)

BLM Record: Set Brass Cap from the remains of two of the original GLO bearing trees, from which:
 A stump, 33" diam., bears N 61° E 144 lks., visible mark BT. (Record)
 A stump, 30" diam., bears N 9° W, 286 lks., with burned out blaze. (Record)

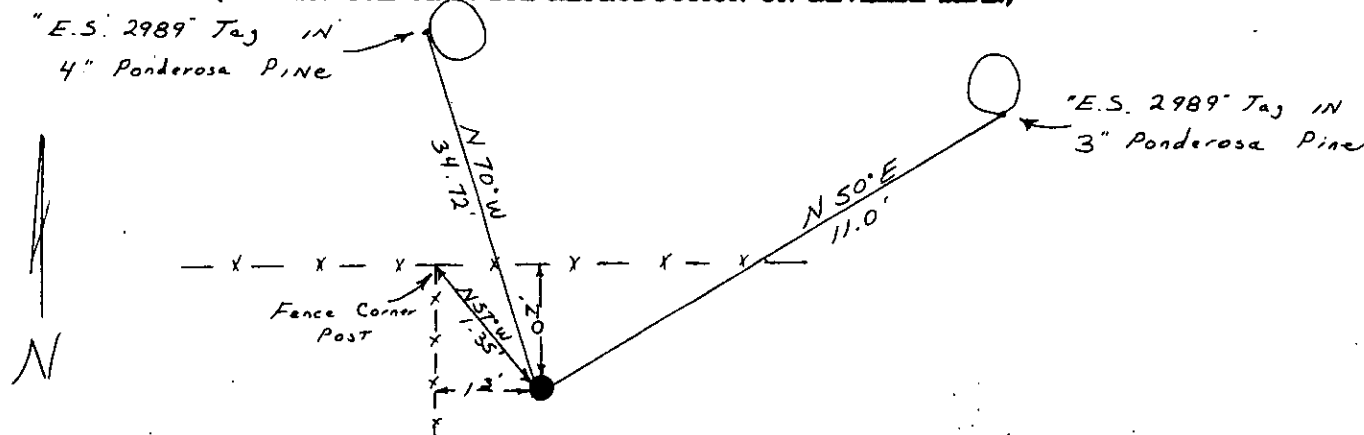
The new bearing trees:
 A Fir, 6", bears S 41 1/4° E 245 lks.
 A Pine, 6", bears S 45° W 249 lks.

DESCRIPTION OF MONUMENT AND ACCESSORIES ESTABLISHED TO PERPETUATE THE ORIGINAL LOCATION OF THIS CORNER:

Date of work: Nov., 1975

Found: BLM Brass Cap; Set new Bearing trees as sketched below.

SKETCH, WITH COURSE AND DISTANCE TO ADJACENT CORNERS IF DETERMINED IN THIS SURVEY. (MAY SKETCH OR PASTE REPRODUCTION ON REVERSE SIDE.)



Surveyor's Seal

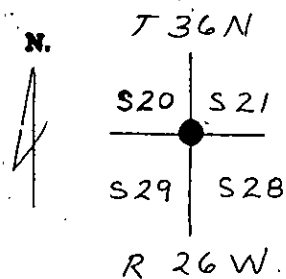
I, S. R. Smith
 certify that the information shown herein is true and correct.

S R Smith
 Signature of Ground Party Chief

I, D. K. Marquardt
 certify that I have carefully performed or reviewed the work done on the diagrammed corner as reported on this recordation form and approve the same.

D K Marquardt
 Signature of Surveyor

DIAGRAM OF CORNER:



= Corner recorded on the sheet

ES 2989
 Registration Number

Office of Clerk and Recorder, County of Lancaster
 This "corner record" was filed for record on the 29th day of January, 1976, was noted on the cross-index plat and is assigned page No. 403, in book No. 1

Clarence L. Vaughn, Mbe W. Stern, Deputy
 County Official