

## INSTRUCTIONS

1. Original and/or subsequent record used to evaluate the corner position.
2. Description of evidence found, note discrepancies in the record, state method of establishing lost or obliterated corners.
3. Description of monument and accessories set to perpetuate the corner position.
4. Sketch or corner, show all pertinent data which can best be shown in a sketch example, corner marking, topography lies, position of accessories, etc.
5. Certification must be signed and sealed by Registered Land Surveyor in State of Montana.
6. Fill in Cross Index & Section Diagram at bottom of sheet.

## CERTIFIED CORNER RECORDATION

Corner 1/4 Sec. 33/Sec. 34 T. 36N R. 26W P.M.M. Lincoln County

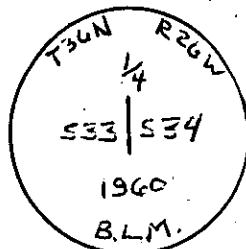
RECORD: Original G.L.O. survey completed Nov. 4, 1893.

B.L.M. remonumentation notes:

The 1/4 sec. cor. of secs. 33 and 34, monumented with a disintegrated wooden post, firmly set in the ground, and witnessed by the remaining of the original trees.

At the corner point

set an iron post, 30 ins. long, 2 1/2 ins. diam., 28 ins. in the group, in concrete, with brass cap mkd.



from which

The remains of the original bearing trees:

A stump, 14 ins. diam. bears S.77°E., 40 lks. dist., visible marks BT.  
(Record: S.73°E., 40 lks.)

A stump, 26 ins. diam. bears S.10°W., 37 lks. dist., visible marks BT.  
(Record: S.06°W., 37 lks.)

The New Bearing Trees:

A fir, 7 ins. diam., bears S.55 1/2°E., 78 lks. dist., mkd. 1/4 S34 BT.

A fir, 7 ins. diam., bears S.33°W., 39 lks. dist., mkd. 1/4 S33 BT.

Raise a mound of stone, 3 ft. base, 2 ft. high, W. of iron post.

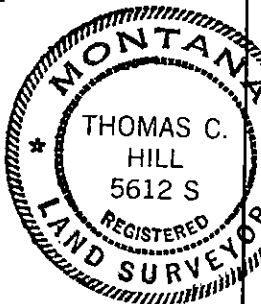
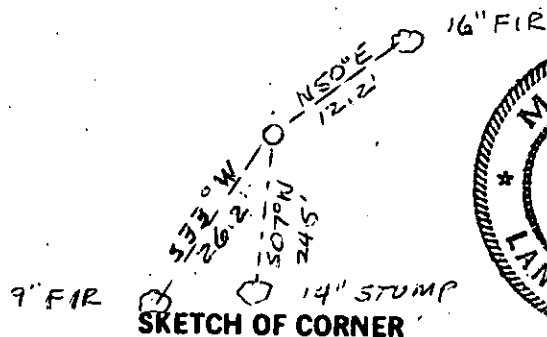
FOUND: A B.L.M. brass cap marked as prescribed above.

from which

A fir, 16 ins. diam., bears N.50°E., 12.2 feet dist., healed face.

A fir, 9 ins. diam., bears S.33°W., 26.2 feet dist., healed face.

A stump, 14 ins. diam., bears S.07°W., 24.5 feet dist., visible marks BT.



## CERTIFICATION

1. James W. Reed

certify the information shown herein is true and correct.

*James W. Reed*  
Signature Ground Party Chief

Thomas C. Hill

certify that this Corner Record correctly represents work performed by me or under my direction in compliance with the "Corner Recordation Act" (70-22-101, et seq., M.D.A.)

*Thomas C. Hill*  
Signature of Surveyor & Seal

Date: 10/20/83 Reg. No. 5612S

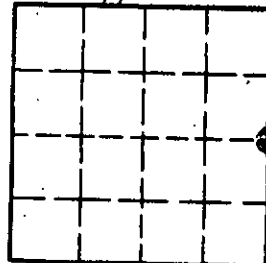
Employer: U.S.F.S.

Office of Clerk and Recorder, County of Lincoln. This "corner record" was filed for record on the November 29 day of 1983 was noted on the cross-index plat and is assigned page No. 2379, in book No. \_\_\_\_\_

*Kretz Siegel by Betty L. Conner*  
County Official Deputy

Cross Index No. \_\_\_\_\_ T. 36 R. 26 P.M.M.

Sec. 33



• - corner this sheet