

## INSTRUCTIONS

1. Original and/or subsequent record used to evaluate the corner position.
2. Description of evidence found, note discrepancies in the record, state method of establishing lost or obliterated corners.
3. Description of monument and accessories set to perpetuate the corner position.
4. Sketch or corner, show all pertinent data which can best be shown in a sketch example, corner marking, topography ties, position of accessories, etc.
5. Certification must be signed and sealed by Registered Land Surveyor in State of Montana.
6. Fill in Cross Index & Section Diagram at bottom of sheet.

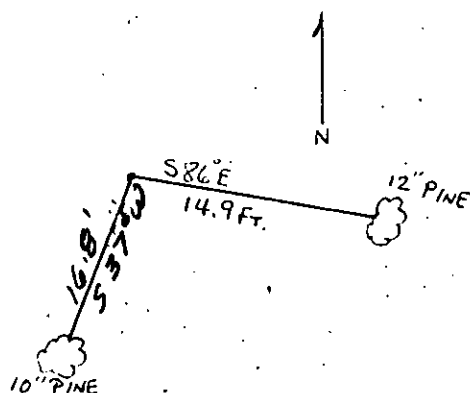
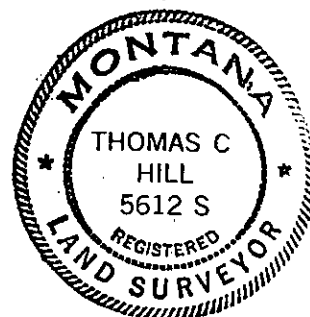
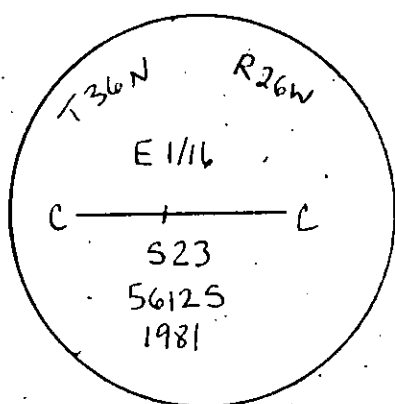
## CERTIFIED CORNER RECORDATION

Corner CE 1/16 Cor. Sec. 23 T. 36N R. 26W P.M.M. Lincoln County

Record: None available

Set: By section subdivision a standard Forest Service 2½ x 30 inch aluminum monument with a 3 inch aluminum cap stamped as shown:

From Which: A 12 inch pine bears S86E, 14.9 feet, marked CE 1/16 B.T.  
A 10 inch pine bears S37W, 16.8 feet, marked XB.T.  
A location poster bears S43E, 4.8 feet



SKETCH OF CORNER

## CERTIFICATION

I, JAMES W REED

certify the information shown herein is true and correct.

James W Reed  
Signature Ground Party Chief

I, \_\_\_\_\_  
certify that this Corner Record correctly represents work performed by me or under by direction in compliance with the "Corner Recordation Act" (70-22-101, et seq., M.D.A.)

Thomas C Hill  
Signature of Surveyor & Seal

Date: 1-27-82 Reg. No. 5612-S

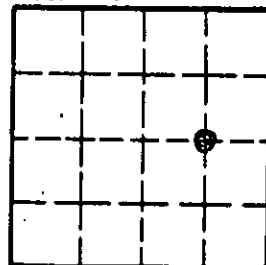
Employer: USFS

Office of Clerk and Recorder, County of Lincoln. This "corner record" was filed for record on the March 16 day of 1982 was noted on the cross-index plat and is assigned page No. 11635, in book No. 1

Eleanor L. Vaughn by Betty L. Conner  
County Official deputy

Cross Index No. P-20 T. 36N R. 26W P.M.M.

Sec. 23



• - corner this sheet