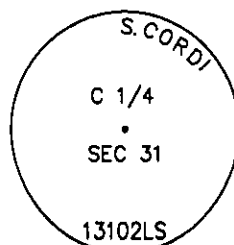


CERTIFIED CORNER RECORDATION

Corner C 1/4 S31 T. 36 N. R. 26 W. P.M.M. LINCOLN County

- I. 2004 Certificate of Survey No. 3263 by Sam Cordi, MT Reg. No. 13102LS, sets for the C 1/4 corner for section 31, a 1 in. diam by 30 in. long galvanized pipe, with a 2 3/8 in. brass cap stamped 13102LS.
- II. Found a 1 1/2 in. diam. galvanized iron pipe, 3 ins. above the ground, firmly set with a 2 1/4 in. diam. brass cap marked as shown below.

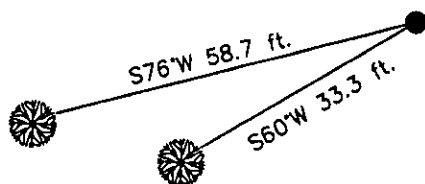


- III. I accept the position of the found iron pipe for the C 1/4 of section 31 and establish two new bearing trees:

A fir, 12 ins. diam, bears S60°W, 33.3 ft. dist., mkd. C 1/4 S31 BT.
A larch, 16 ins. diam, bears S76°W, 58.7 ft. dist., mkd. C 1/4 S31 BT.

Painted red the scribed faces and 6 in. bands on the bearing trees. Attached Land Survey Monument and Bearing Tree signs. Set a 6 ft. galvanized steel guard post 3 ft. West and South, with Land Survey Monument and Property Boundary decals attached.

Date of Fieldwork: 11/6/2007
Survey crew: Steve Boyer, Tom Hommel
Magnetic declination: 20° East assumed
Equipment used: Hand compass and loggers tape
U.S. Forest Service, Supervisors Office, 1101 Hwy. 2 West, Libby, MT 59923 (406) 293-6211



SKETCH OF CORNER

NOT TO SCALE

CERTIFICATION

I, Thomas M. Hommel 10800LS
certify the information shown herein is true and correct.

Thomas M. Hommel
Signature Ground Party Chief

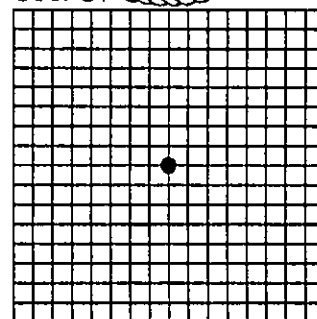
I, Steven A. Boyer
certify that this Corner Record correctly represents work performed by me or under my direction in compliance with the "Corner Recordation Act" (MCA 19-2-101, et seq., M.C.A.)

Steven A. Boyer
Signature of Surveyor & Seal

Date: 12/17/2007 Reg. No. 9750LS

Employer: U. S. Forest Service

Sec. 31



Office of Clerk and Recorder, County of Lincoln

208333 BOOK: CCR CC&R'S PAGE: 11166 Pages: 1
STATE OF MONTANA LINCOLN COUNTY
RECORDED: 12/28/2007 2:03 KOI: CC&R'S
TAMMY D. LAUER CLERK AND RECORDER
FEE: \$0.00 BY: Julie Blomdahl, Deputy
TO: FILED

Cross Index No. X-3 T. 36N. R. 26W. P.M., MT

Adopted July 1, 1981, Montana Board of Professional Engineers & Land Surveyors

● corner this sheet