

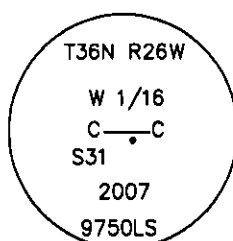
CERTIFIED CORNER RECORDATION

Corner CW 1/16 S31 T 36 N. R. 26 W. P.M.M. LINCOLN County

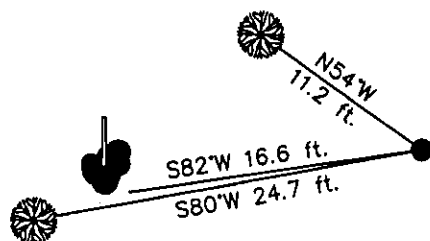
- I. Record: No previous record.
- II. Found a pile of rocks with a 3 in. X 3 in. squared off wood post. Origin unknown.
- III. I did not accept the position of the wood post. At the position determined by survey, set a 5/8 in. diam. by 24 in. long rebar with a 3 1/4 in. diam. aluminum cap, marked as shown below, flush in a collar of stone, from which:

A fir, 12 ins. diam, bears S80°W, 24.7 ft. dist., mkd. CW 1/16 S31 BT.
A larch, 10 ins. diam, bears N54°W, 11.2 ft. dist., mkd. CW 1/16 S31 BT.
The found post and pile of rocks bears, S82°W, 16.6 ft. dist.

Painted red the scribed faces and 6 in. bands on the bearing trees. Attached Land Survey Monument and Bearing Tree signs. Set a 6 ft. galvanized steel guard post 3 ft. North and East, with Land Survey Monument and Property Boundary decals attached.



Date of Fieldwork: 10/31/2007
Survey crew: Steve Boyer, Tom Hommel
Magnetic declination: 20° East assumed
Equipment used: Hand compass and loggers tape
U.S. Forest Service, Supervisors Office, 1101 Hwy. 2 West, Libby, MT 59923 (406) 293-6211



SKETCH OF CORNER

NOT TO SCALE

CERTIFICATION

I, Thomas M. Hommel 10800LS
certify the information shown herein is true and correct.

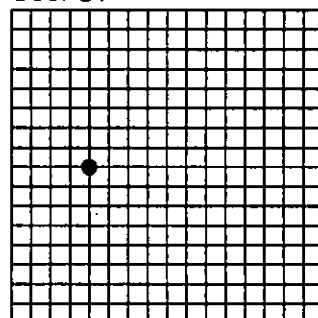
Signature of Ground Party Chief

I, Steven A. Boyer
certify that this Corner Record correctly represents work performed by me or under my direction in compliance with the "Corner Recordation Act" (70-22-107, et seq., M.C.A.)

Signature of Surveyor & Seal

Date: 12/14/2007 Reg. No. 9750LS
Employer: U. S. Forest Service

Sec. 31



Office of Clerk and Recorder, County of Lincoln

208332 BOOK: CCR CC&R'S PAGE: 11165 Pages: 1
STATE OF MONTANA LINCOLN COUNTY
RECORDED: 12/28/2007 2:02 KOI: CC&R'S
TAMMY D. LAUER CLERK AND RECORDER
FEE: \$0.00 BY: Steve Blomdahl, Deputy
TO: FILED

Cross Index No. X-2 T. 36N. R. 26W. P.M., MT

Adopted July 1, 1981, Montana Board of Professional Engineers & Land Surveyors

● corner this sheet