

CERTIFIED CORNER RECORDATION

Corner 1/4 S31|32 T. 36 N. R. 26 W. P.M.M. LINCOLN County

- I. 1893 Original Subdivision and Meanders by Peter M. Cardell and Abram L. Jaqueth: Set a psot 3 ft. long, 3 ins. square, 24 ins. in the ground for 1/4 sec. cor., marked 1/4 S on W. face, from which:
A fir, 14 ins. diam, bears N18°E, 47 lks. dist., marked. 1/4 S BT.
A fir, 16 ins. diam, bears S63°W, 43 lks. dist., mkd. 1/4 S BT.

1959 B.L.M. Remonumentation by David R. Cunningham and William E. Stephens: The 1/4 sec. cor. of secs. 31 and 32, monumented with a disintegrated wooden post, firmly set in the ground, and witnessed by the remains of the origianl bearing trees. At the corner point, set an iron post, 30 ins. long, 2 1/2 ins. diam., 26 ins. in the ground, in concrete, with barass cap mkd.

from which the remains of the origianl bearing trees:

A stump, 23 ins. diam, bears N18°E, 47 lks. dist., visible marks BT.

A stump, 26 ins. diam, bears S63°W, 43 lks. dist., mkd. 1/4 S BT.

the new bearing trees

A fir, 9 ins. diam, bears N75 1/4°E, 36 lks. dist., mkd 1/4 S32 BT.

A pine, 6 ins. diam, bears S33 1/4°W, 30 lks. dist., mkd. 1/4 S31 BT.

Raise a mond of stone, 3 ft. base, 2 ft. high. W. of the iron post.

1998 Certified Corner Recordation by Dayton D. Nelson, MT Reg. No. 3897ES: Corner was in a rock pile at the intersection of an existing fence and remnants of an old fence. The pile was inside a roll of woven wire from the old fence and had been there for several years. Origanl notes call for a limestone 12"x10"x6", 8" in the ground, marked 1-4 on W. face with pits 18"x18"x12", N. & S. of stone, 5 1/2 ft. dist. and raised a mound of earth 1 1/2 ft. high, 3 1/2 ft. base alongside. Orig. stone could not be ident., but location of corner by survey from south and north sec. corners agreed with record location. Corner had been used in earlier survey. Set a 5/8" rebar in rock pile, 14" in the ground at corner location.

- II. Found a 2 1/2 in. diam. iron pipe, 3 ins. above the ground, firmly set with a 3 1/4 in. diam. B.L.M. brass cap marked as shown below, from which:

A pine, 6 ins. diam, bears S33 1/4°W, 30 lks. dist., mkd. 1/4 S31 BT.

- III. Painted red the scribed faces and 6 in. bands on the bearing trees. Attached Land Survey Monument and Bearing Tree signs. Set a 6 ft. galvanized steel guard post 3 ft. West and South, with Land Survey Monument and Property Boundary decals attached.

Date of Fieldwork: 11/6/2007

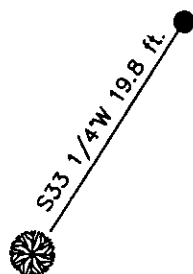
Survey crew: Steve Boyer, Tom Hommel

Magnetic declination: 20° East assumed

Equipment used: Hand compass and loggers tape

U.S. Forest Service, Supervisors Office, 1101 Hwy. 2 West, Libby, MT 59923 (406) 293-6211

SKETCH OF CORNER



NOT TO SCALE

CERTIFICATION

I, Thomas M. Hommel 10800L8
certify the information shown herein is true and correct.

Thomas M. Hommel
Signature Ground Party Chief

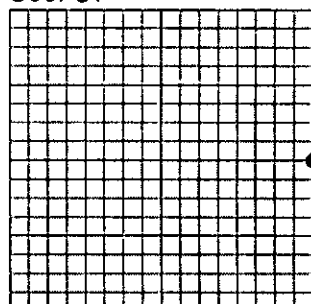
I, Steven A. Boyer
certify that this Corner Record correctly represents work performed by me or under my direction in compliance with the "Corner Recordation Act" 22-101, et seq., M.C.A.

Steven A. Boyer
Signature of Surveyor

Date: 12/17/2007 Reg. No. 9750LS

Employer: U. S. Forest Service

Sec. 31



● corner this sheet

Office of Clerk and Recorder, County of Lincoln

208331 BOOK: CCR CC&R'S PAGE: 11164 Pages: 1

STATE OF MONTANA LINCOLN COUNTY

RECORDED: 12/28/2007 2:01 KOI: CC&R'S

TAMMY D. LAUER CLERK AND RECORDER

FEE: \$0.00

BY: Bill Blomdall, Deputy

TO: FILED

Cross Index No. X-5 T. 36N. R. 26W. P.M., MT

Adopted July 1, 1981, Montana Board of Professional Engineers & Land Surveyors