

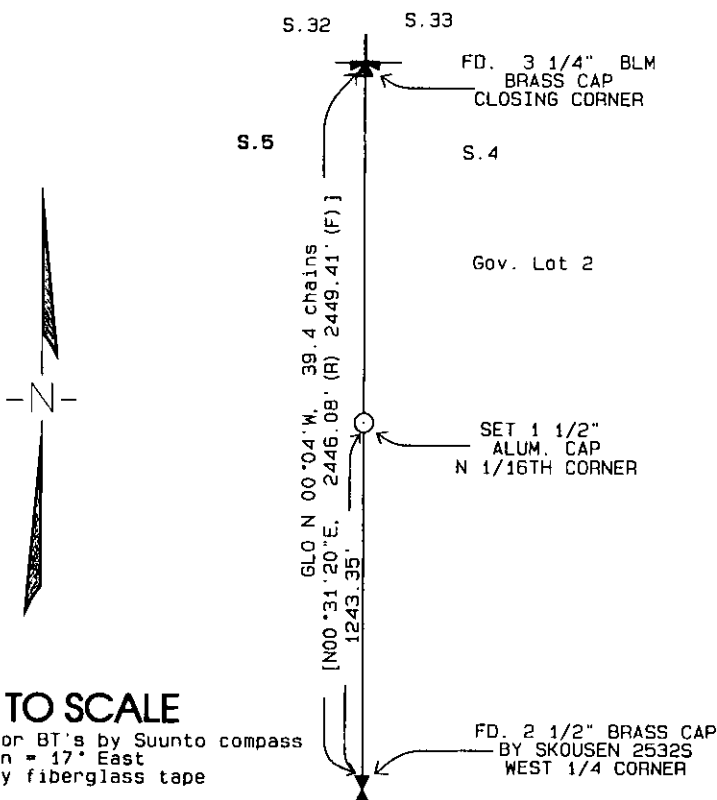
CERTIFIED CORNER RECORDATION

Corner N 1/16 OF SEC. 4 T. 36N R. 26W P.M.M. LINCOLN County

Record: No corner set in the original survey

Set:

At the proportionate distance from the West 1/4 corner of section 4 on the section line between the west 1/4 corner of section 4 and the closing corner for sections 4 and 5 on the 9th standard parallel.
Set: a 5/8in.X 24in. rebar with a 1 1/2in. aluminum cap marked "VERMILYEA 14185LS" encircled by a 2ft. diameter mound of stone 1/2ft. high for the N1/16 corner common to sections 4 and 5 also known as SW corner corner for Government lot 2 of section 4 from which:
a 9in. diameter douglas fir bears S 34°W, 15.30ft., set BT tag;
a 8in. diameter douglas fir bears S 57°E, 9.85ft., set BT tag.

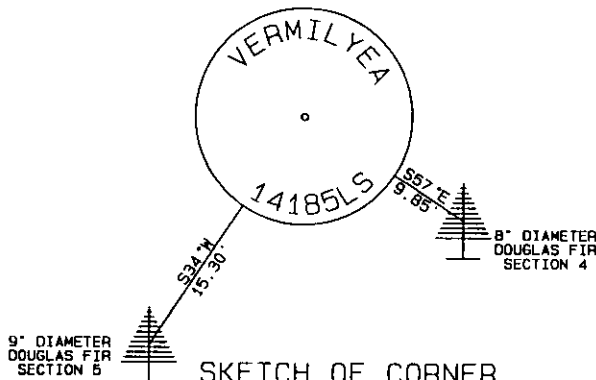


NOT TO SCALE

Bearings for BT's by Suunto compass
Declination = 17° East
Distance by fiberglass tape

LEGEND

Symbol	Description
I	Fd. 2 1/2 " B.C. by "Skousen, 2532S"
O	Set 1 1/2" A.C. by "Vermilyea 14185LS"
[]	1971 unrecorded survey by Stanley J. Skousen, requested by Fortine District Ranger, Kootenai National Forest. On file with the U.S.D.A., Forest Service, Division of Engineering, Missoula, MT.



SKETCH OF CORNER

CERTIFICATION

I, Svea Vermilyea
certify the information shown herein is true and correct.

Svea Vermilyea
Signature Ground Party Chief

I, Darrell Vermilyea
certify that this Corner Record correctly represents work performed by me or under my direct supervision in accordance with the "Corner Recordation Act" (70-22-101 et seq., M.C.A.)

Darrell Vermilyea
Signature of Surveyor

Date: 9/7/07 Reg. No. 14185LS

Employer: Vermilyea Land Surveyors

No. 14185LS

Office of Clerk and Recorder 205930 BOOK: CCR CC&R'S PAGE: 11114 Pages: 1

record" was filed for record STATE OF MONTANA LINCOLN COUNTY
RECORDED: 09/10/2007 12:00 KOI: CC&R'S

was noted on the cross-index TAMMY D. LAUER CLERK AND RECORDER

book No. FEE: \$0.00 BY: *Tammy D. Lauer*

TO: VERMILYEA LAND SURVEYOR
County Official

Cross Index No. B-9 T. 36 N R. 26 W PMM

Adopted July 1, 1981, Montana Board of Professional Engineers & Land Surveyors

• corner this sheet