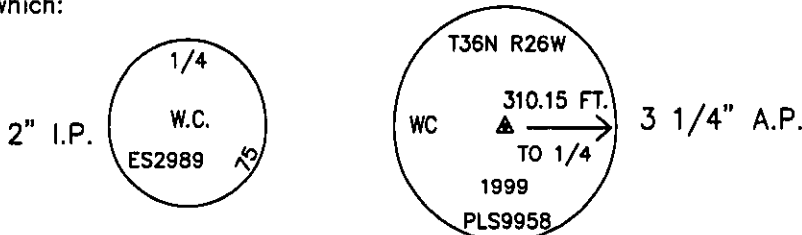


CERTIFIED CORNER RECORDATION

Corner WC 1/4 S30 S31 T 36 N. R. 26 W. P.M.M. LINCOLN County

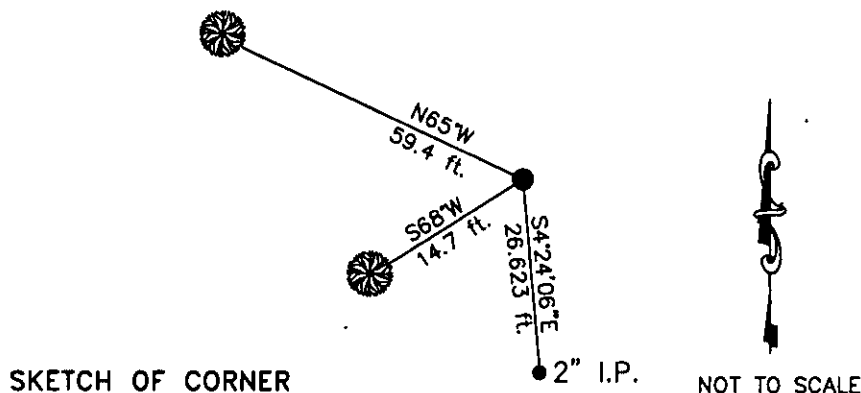
- I. Record: 1893 Subdivision and Meanders of T36N, R26W, by Peter M. Cardell and Abrahm L. Jaqueth: On top of cut bank 170 ft. above right bank of Tobacco River. Set a sandstone 22x12x6 ins., 17 ins. in the ground for Witness Cor. to 1/4 sec. cor. marked WC 1/4 on N. face from which
A pine 9 ins. dia. bears N7°E 17 lks. dist., marked WC 1/4 S BT.
A fir 14 ins. dia. bears N29°W 47 lks. dist., marked WC 1/4 S BT.
1933 U. S. Forest Service Exchange Survey No. 1252 by A. O. Modlin: Fall 65 lks. S. of the W.C. to the 1/4 sec. cor., as determined by measurements to bearing trees. Stone has disappeared. Set a washed sandstone boulder 24x8x6 inches, 14 inches in the ground for W.C., marked WC 1/4 on the N. face, and with a cross (X) on top for the exact corner point. Since the NW. bearing tree has been cut and the SW. bearing tree (this tree bears S.7°W., 17 lks. dist. instead of N.7°E. 17 lks. dist.) is dead and down, I mark new bearing trees as follows:
A cross (X) on a yellow pine 14 ins. dia. bears S11°25'E 24 lks. dist., marked WC 1/4 S 31 BT.
A cross (X) on a Douglas fir 9 ins. dia. bears N64°45'W 90 lks. dist., marked WC 1/4 S 30 BT.
1975 Certificate of Survey No. 152 by D. K. Marquardt, Mt. Reg. No. 2989ES: Set brass cap. See corner record. (Note: No corner record was found in the Lincoln County Courthouse).
2001 Certificate of Survey No. 3041 by James R. Staples, Mt. Reg. No. 9958S: Found original BT per Exchange Survey No. 1252. See corner record WC. (Note: No corner record was found in the Lincoln County Courthouse).
2004 Certificate of Survey No. 3299 by Dawn Marquardt, Mt. Reg. No. 7328S: Found aluminum pipe monument. Steel pipe with brass cap bears S04°37'12"E, 26.85 ft.
II. Found a 2 1/2" diam. aluminum pipe, 6 ins. above ground, firmly set with 3 1/4" diam. aluminum cap marked as shown, from which:



- A pine, 11 ins. diam, bears S58°W, 14.7 ft. dist., mkd. with a pitched face with visible scribe marks.
A fir, 16 ins. diam, bears N65°W, 59.4 ft. dist., with WC 1/4 visible.
A 2" diam. iron pipe with brass cap, bears S04°24'06"E, 26.623 ft. dist. marked as shown above.

- III. Did not paint the bearing trees. Trees are close to a private residence.

Date of Fieldwork: 10/20/2006
Survey crew: Tom Hommel
Magnetic declination: 20° East assumed
Equipment used: Hand compass and loggers tape
U.S. Forest Service, Supervisors Office, 1101 Hwy. 2 West, Libby, MT 59923 (406) 293-6211



CERTIFICATION
I, Thomas M. Hommel 10800LS
certify the information shown herein is true and correct.
Thomas M. Hommel
Signature Ground Party Chief
I, Steven A. Boyer
certify that this Corner Record correctly represents work performed by me or under my direction in compliance with the "Corner Recordation Act" (70-62-101, let. reg., M.C.A.)
Steven A. Boyer
Signature of Surveyor & Recorder
Date: 11/01/2006 Reg. No. 9750 REGISTERED
Employer: U. S. Forest Service SURVEYOR

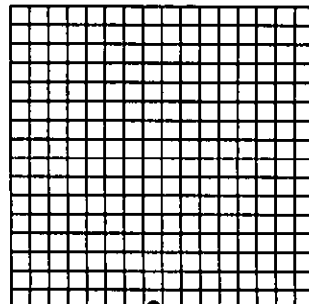
Office of Clerk and Recorder, County of Lincoln

200657 BOOK: CCR CC&R'S PAGE: 11003 Pages: 1
STATE OF MONTANA LINCOLN COUNTY
RECORDED: 01/30/2007 10:10 KOI: CC&R'S
TAMMY D. LAUER CLERK AND RECORDER
FEE: \$0.00 BY: Joanne Dume
TO: U.S. FOREST SERVICE Supervisor

Cross Index No. S30 WC 1/4 S31 T 36N. R. 26W. P.M., MT

Adopted July 1, 1981, Montana Board of Professional Engineers & Land Surveyors

Sec. 30



● corner this sheet