

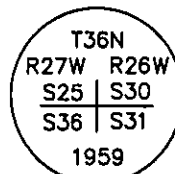
CERTIFIED CORNER RECORDATION

Corner S25 | S30
S36 | S31 T. 36 N. R. 26/27 W. P.M.M. LINCOLN County

- I. Record: 1893 West Boundaries of T36N. R26 & 27W. by Peter M. Cardell and Abraham L. Jaqueth: Set a sand stone, 18x12x8, 12 ins. in the ground, for Cor. to Secs. 25, 30, 31 & 36 marked with 1 notch on S. and 5 notches on N. edges. From which:
- A tamarack, 15 ins. diam, bears N35°E, 22 lks. dist., mkd. T36N R26W S30 BT.
 - A tamarack, 12 ins. diam, bears S73°30'E, 34 lks. dist., mkd. T36N R26W S31 BT.
 - A tamarack, 11 ins. diam, bears S69°30'W, 54 lks. dist., mkd. T36N R27W S36 BT.
 - A pine, 16 ins. diam, bears N38°W, 53 lks. dist., mkd. T36N R27W S25 BT.

1933 U. S. Forest Service Exchange Survey No. 1252 by A. O. Modlin: I find the corner of Secs. 25 and 36, T. 36 N., R. 27 W., and Secs. 30 and 31, T. 36 N., R. 26 W., which is a limestone 10x12x6 inches above ground, properly marked and witnessed by stumps of bearing trees as described in the official record.

1959 BLM Remonumentation by David R. Cunningham and William E. Stephens: The cor. of secs. 25, 30, 31 and 36, on the W. bdy. of the Tp., monumented with a sandstone, 18x12x8 ins., firmly set and mkd. with 5 notches on the N. and 1 notch on the S. faces, and witnessed by the remains of two of the original bearing trees. At the corner point. Set an iron post, 30 ins. long, 2 1/2 ins. diam., 27 ins. in the ground, in concrete, with brass cap mkd.



from which

The remains of the original bearing trees:

- A stump, 16 ins. diam., bears N.35°E., 22 lks. dist., visible marks BT. (Record)
- A stump, 14 ins. diam., bears S.63°E., 34 lks. dist., visible marks BT. (Record: S.73 1/2°E., 34 lks.)

The new bearing trees:

- A larch, 10 ins. diam., bears N.77 1/4°E., 21 lks. dist., mkd. T36N R26W S30 BT.
- A fir, 11 ins. diam., bears S.42 1/2°E., 89 lks. dist., mkd. T36N R26W S31 BT.
- A larch, 13 ins. diam., bears S.39°W., 99 lks. dist., mkd. T36N R27W S36 BT.
- A larch, 5 ins. diam., bears N.18 1/4°W., 37 lks. dist., mkd. T36N R27W S25 BT.

Bury the original stone alongside and raise a mound of stone, 3 ft. base, 3 ft. high, W. of the iron post.

1970 Plat No. 1711 by J. H. Ninneman, Mt. Reg. No. 534ES: Brass cap mon. by BLM.

1976 Certificate of Survey Nos. 181 and 181A by D. K. Marquardt, Mt. Reg. No. ES2989: Found BLM brass cap.

1986 Certificate of Survey No. 1496 by D. K. Marquardt, Mt. Reg. No. ES2989: Fd 2 1/2" BLM brass cap.

2004 Certificate of Survey No. 3299 by Dawn Marquardt, Mt. Reg. No. 7328S: BLM brass cap.

- II. Found a 2 1/2 in. diam. iron pipe, 5 ins. above ground with 3 1/4 in. diam. BLM brass cap, firmly set and marked as shown above, from which:

- A larch, 16 ins. diam, bears N77°E, 13.86 ft. dist., mkd. with a healed face.
- A fir, 13 ins. diam, bears S42°E, 58.7 ft. dist., mkd. with a healed face.
- A larch, 17 ins. diam, bears S39°W, 65.0 ft. dist., mkd. with a healed face.
- A larch, 8 ins. diam, bears N18°W, 24.4 ft. dist., mkd. with a healed face.
- A steel post bears NORTH, 3.0 ft. dist. with a Land Survey Monument decal attached.

- III. Painted red the scribed face and a red band around the bearing trees.

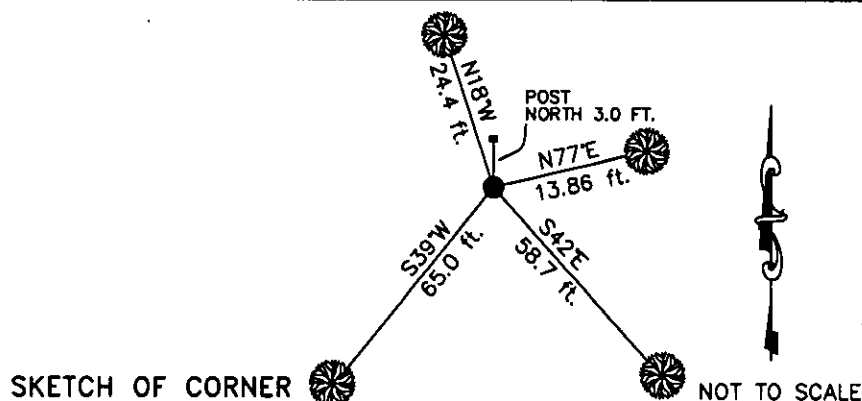
Date of Fieldwork: 10/19/2006

Survey crew: Tom Hommel

Magnetic declination: 20° East assumed

Equipment used: Hand compass and loggers tape

U.S. Forest Service, Supervisors Office, 1101 Hwy. 2 West, Libby, MT 59923 (406) 293-6211



SKETCH OF CORNER

NOT TO SCALE

CERTIFICATION

I, Thomas M. Hommel 10800LS
certify the information shown herein is true and correct.

Thomas M. Hommel
Signature Ground Party Chief

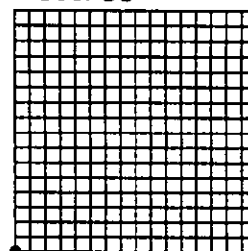
I, Steven A. Boyer
certify that this Corner Record correctly represents work performed by me or under my direction in compliance with the "Corner Recordation Act" (70-22-101, et seq., M.C.A.)

Steven A. Boyer
Signature of Surveyor & Seal

Date: 10/31/2006 Reg. No. 9750LS

Employer: U. S. Forest Service

Sec. 30



• corner this sheet

Office of Clerk and Recorder, County of Lincoln

200654 BOOK: CCR CC&R'S PAGE: 11000 Pages: 1
STATE OF MONTANA LINCOLN COUNTY
RECORDED: 01/30/2007 9:50 KOI: CC&R'S
TAMMY D. LAUER CLERK AND RECORDER
FEE: \$0.00 BY: Joanne Lauer
TO: U.S. FOREST SERVICE

Cross Index No. V-1 T. 36N. R. 26W. P.M., MT

Adopted July 1, 1981, Montana Board of Professional Engineers & Land Surveyors