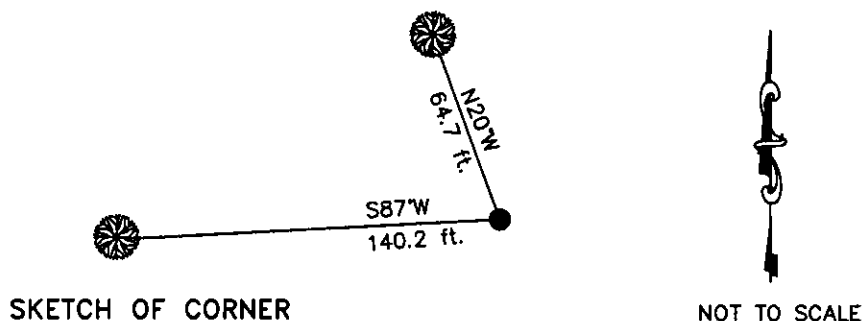


CERTIFIED CORNER RECORDATION

Corner WC 5 ES 1252 T. 36 N. R. 26 W. P.M.M. LINCOLN County

- I. Record: 1893 Subdivision and Meanders of T36N. R26W. by Peter M. Cardell and Abraham L. Jaqueth:
1933 U. S. Forest Service Exchange Survey No. 1252 by A. O. Modlin: True point for Cor. No. 5 falls in channel of Tobacco River. Impossible to establish.
- From true point for Cor. No. 5 I run N.67°10'W., 41 lks. dist. to point on firm ground which I establish for W.C. to cor. No. 5 of this survey as follows:
- Place a small stone marked with a cross (X) under slatestone 24x9x9 ins., 14 ins. in the ground, marked W C 5 E S 1252 on the SW. face, and a cross (X) on top for the exact cor. point, from which
- A cross (X) on a Douglas fir 8 ins. dia. bears S86°45'W 212 lks. dist.
A cross (X) on a yellow pine 7 ins. dia. bears N20°35'W 98 lks. dist., each blazed and scribed W C 5 E S 1252 BT.
- Pits impracticable. Raise a mound of stone 4 ft. base, 2 ft. high. SW. of corner.
- II. Found a stone 10x9 ins., 11 ins. above ground, firmly set and clearly marked W C ES 1252 on SW face (no 5 found) and an "X" on top, from which:
- A fir, 16 ins. diam, bears S87°W, 140.2 ft. dist., with a healed face.
A pine, 16 ins. diam, bears N20°W, 64.7 ft. dist., mkd. with a healed face.
- III. Painted red the scribed face and a red band around the bearing trees.

Date of Fieldwork: 10/20/2006
Survey crew: Tom Hommel
Magnetic declination: 20° East assumed
Equipment used: Hand compass and loggers tape
U.S. Forest Service, Supervisors Office, 1101 Hwy. 2 West, Libby, MT 59923 (406) 293-6211



CERTIFICATION

I, Thomas M. Hommel 10800LS
certify the information shown herein is true and correct.

Thomas M. Hommel
Signature Ground Party Chief

I, Steven A. Boyer
certify that this Corner Record correctly represents work performed by me or under my direction in compliance with the "Corner Recordation Act" (26-22-101, et seq., M.C.A.)

Steven A. Boyer
Signature of Surveyor & Seal

Date: 11/01/2006 Reg. No. 97501350LS
Employer: U. S. Forest Service

Office of Clerk and Recorder, County of Lincoln

199647 BOOK: CCR CC&R'S PAGE: 10981 Pages: 1
STATE OF MONTANA LINCOLN COUNTY
RECORDED: 12/13/2006 1:01 KOI: CC&R'S
CORAL M. CUMMINGS CLERK AND RECORDER
FEE: \$0.00 BY: Janice L. Larkin
TO: US FOREST SERVICE

Cross Index No. WC 5 ES 1252 T. 36N. R. 26W. P.M., MT

Adopted July 1, 1981, Montana Board of Professional Engineers & Land Surveyors

