

CERTIFIED CORNER RECORDATION

1 ES 1252
Corner S 1/16 S25|S30 T. 36 N. R. 26 W. P.M.M. LINCOLN County

- I. Record: 1893 Subdivision and Meanders of T36N. R26W. by Peter M. Cardell and Abrahm L. Jaqueth;
1933 U. S. Forest Service Exchange Survey No. 1252 by A. O. Modlin; Beginning at the point for the
S. 1/16 sec. cor. of Secs. 25 and 30, heretofore located, which I establish for the S. 1/16 sec. cor.
of Secs. 25 and 30, and cor. No. 1 of this survey as follows:

Place a small stone marked with a cross (X) under limestone 24x16x8 ins., 14 ins. in the ground,
marked 1/16 on the N., and 1 E S 1252 on the NE. faces, and a cross (X) on top for the exact
cor. point, from which

A cross (X) on a yellow pine 14 ins. dia. bears S77°25'W 48 lks. dist., marked 1/16 S 25-1 ES
1252 BT.

A cross (X) on a tamarack 14 ins. dia. bears N59°55'E 30 lks. dist., marked S 1/16 S 30-1 ES
1252 BT.

Raise a mound of earth 4 ft. base, 2 ft. high. NE. of corner.

- II. Found a stone 11x9 ins., 10 ins. above ground, firmly set and clearly marked 1 ES 1252 on NE face
and 1/16 on NW face and an "X" on top, from which:

A larch, 15 ins. diam, bears N30°E, 28.0 ft. dist., mkd. with a healed face.

A larch, 16 ins. diam, bears N60°E, 19.8 ft. dist., mkd. with a healed face.

- III. Painted red the scribed face and a red band around the bearing trees.

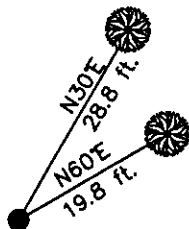
Date of Fieldwork: 10/20/2006

Survey crew: Tom Hommel

Magnetic declination: 20° East assumed

Equipment used: Hand compass and loggers tape

U.S. Forest Service, Supervisors Office, 1101 Hwy. 2 West, Libby, MT 59923 (406) 293-6211



SKETCH OF CORNER

NOT TO SCALE

CERTIFICATION

I, Thomas M. Hommel 10800LS
certify the information shown herein is true and correct.

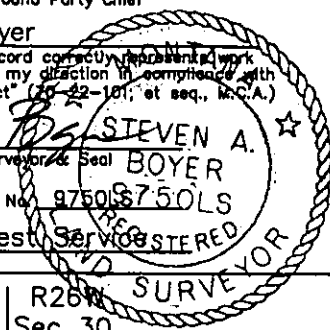
Thomas M. Hommel
Signature Ground Party Chief

I, Steven A. Boyer
certify that this Corner Record correctly represents work
performed by me or under my direction in compliance with
the "Corner Recordation Act" (20-22-101, et seq., M.C.A.)

Steven A. Boyer
Signature of Surveyor & Seal

Date: 11/01/2006 Reg. No. 9750 S750LS

Employer: U. S. Forest Service



Office of Clerk and Recorder, County of Lincoln This "corner

record" was filed for 199646 BOOK: CCR CC&R'S PAGE: 10980 Pages: 1

was noted on the STATE OF MONTANA LINCOLN COUNTY

book No. RECORDED: 12/13/2006 1:00 KOI: CC&R'S

CORAL M. CUMMINGS CLERK AND RECORDER

FEE: \$0.00

TO: US FOREST SERVICE

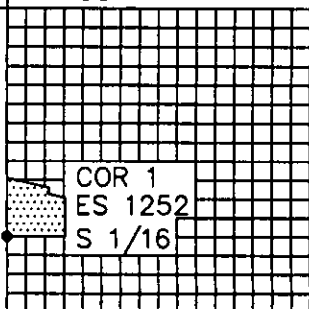
BY: Heather D. Smith

1 ES 1252

Cross Index No. U-1 T. 36N. R. 26W. P.M., MT

Adopted July 1, 1981, Montana Board of Professional Engineers & Land Surveyors

R27W Sec. 25 R26W Sec. 30



• corner this sheet