

# CERTIFIED CORNER RECORDATION

Corner 3 ES 1252 T. 36 N. R. 26 W. P.M.M. LINCOLN County

I. Record: 1893 Subdivision and Meanders of T36N. R26W. by Peter M. Cardell and Abraham L. Jaqueth:

1933 U. S. Forest Service Exchange Survey No. 1252 by A. O. Modlin: Point where right of way widens to 200 ft. (As determined from plat furnished by Great Northern Railway Co.), which I establish for Cor. No. 3 of this survey as follows:

Place a small stone marked with a cross (X) under washed limestone boulder 26x8x6 ins., 16 ins. in the ground, marked 3 E S 1252 on the SW. face, and a cross (X) on top for the exact cor. point, from which

A cross (X) on a Douglas fir 26 ins. dia. bears N81°35'W 106 lks. dist.

A cross (X) on a Douglas fir 6 ins. dia. bears N33°10'W 30 lks. dist., each blazed and scribed 3 E S 1252 BT.

Raise a mound of stone 4 ft. base, 2 ft. high, SW. of cor.

II. Found a stone 6x9 ins., 10 ins. above ground, firmly set and clearly marked 3 ES 1252 on SW face and an "X" on top, from which:

A fir, 25 ins. diam, bears S81°W, 69.9 ft. dist., with chop marks visible.

A fir, 22 ins. diam, bears N33°W, 20.3 ft. dist., mkd. with a healed face. (Rec. 19.8 ft.)

Mound of stone SW of corner.

**NOTE:** The blazed face for the NW bearing tree faces SW and not towards the stone.

III. Painted red the scribed face and a red band around the bearing trees.

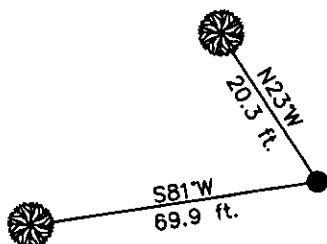
Date of Fieldwork: 10/20/2006

Survey crew: Tom Hommel

Magnetic declination: 20° East assumed

Equipment used: Hand compass and loggers tape

U.S. Forest Service, Supervisors Office, 1101 Hwy. 2 West, Libby, MT 59923 (406) 293-6211



SKETCH OF CORNER

NOT TO SCALE

## CERTIFICATION

I, Thomas M. Hommel 10800LS  
certify the information shown herein is true and correct.

*[Signature]*  
Signature Ground Party Chief

I, Steven A. Boyer ONTA  
certify that this Corner Record correctly represents work performed by me or under my direction in compliance with the "Corner Restoration Act" (20-22-101, et seq., M.C.A.)

*[Signature]*  
Signature of Surveyor & Seal

Date: 10/31/2006 Reg. No. 9750LS

Employer: U. S. Forest Service

Sec. 30

Office of Clerk and Recorder, County of Lincoln This "corner

record" was filed for 199643 BOOK: CCR CC&R'S PAGE: 10977 Pages: 1

was noted on the cr STATE OF MONTANA LINCOLN COUNTY

book No. RECORDED: 12/13/2006 12:57 KOI: CC&R'S

CORAL M. CUMMINGS CLERK AND RECORDER

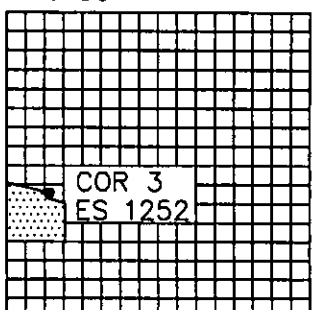
FEE: \$0.00

BY: *[Signature]*

TO: US FOREST SERVICE

Cross Index No. 3 ES 1252 T. 36N. R. 26W. P.M., MT

Adopted July 1, 1981, Montana Board of Professional Engineers & Land Surveyors



• corner this sheet