

CERTIFIED CORNER RECORDATION

Corner 4 ES 1252 T. 36 N. R. 26 W. P.M.M. LINCOLN County

I. Record: 1893 Subdivision and Meanders of T36N, R26W, by Peter M. Cardell and Abraham L. Jaqueth;

1933 U. S. Forest Service Exchange Survey No. 1252 by A. O. Modlin: Point on S. bdy. of right of way of Great Northern Railroad, which I establish for Cor. No. 4 of this survey as follows:

Place a small stone marked with a cross (X) under a washed limestone boulder 28x9x9ins., 18ins. in the ground, marked 4 ES 1252 on the NE. faces, and a cross (X) on top for the exact cor. point, from which

A cross (X) on a spruce 16 ins. dia. bears S29°05'W 99 lks. dist.

A cross (X) on a Douglas fir 11 ins. dia. bears S68°20'W 98 lks. dist., each blazed and scribed 4 ES 1252 BT.

Raise a mound of stone 4 ft. base, 2 ft. high. SW. of corner.

II. Found a stone 10x9 ins., 11 ins. above ground, firmly set and clearly marked 4 ES 1252 on SW face and an "X" on top, from which:

A spruce, 25 ins. diam, bears S29°W, 65.3 ft. dist., mkd. with a healed face.

A fir, 16 ins. diam, bears S68°W, 64.6 ft. dist., mkd. with a healed face.

III. Painted red the scribed face and a red band around the bearing trees.

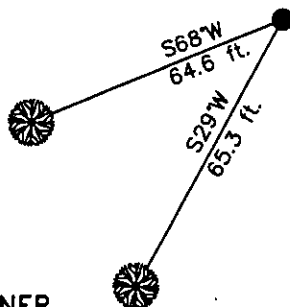
Date of Fieldwork: 10/20/2006

Survey crew: Tom Hommel

Magnetic declination: 20° East assumed

Equipment used: Hand compass and loggers tape

U.S. Forest Service, Supervisors Office, 1101 Hwy. 2 West, Libby, MT 59923 (406) 293-6211



SKETCH OF CORNER

NOT TO SCALE

CERTIFICATION

I, Thomas M. Hommel 10800LS
certify the information shown herein is true and correct.

Thomas M. Hommel
Signature of Ground Party Chief

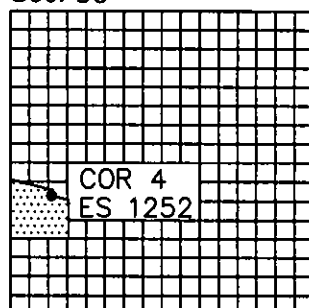
I, Steven A. Boyer
certify that this Corner Record correctly represents work performed by me or under my direction in compliance with the "Corner Recordation Act" (70-22-101, et seq., M.C.A.)

Steven A. Boyer
Signature of Surveyor

Date: 11/01/2006 Reg. No. 9750LS

Employer: U. S. Forest Service

Sec. 30



• corner this sheet

Office of Clerk and Recorder, County of Lincoln

199642 BOOK: CCR CC&R'S PAGE: 10976 Pages: 1

STATE OF MONTANA LINCOLN COUNTY

RECORDED: 12/13/2006 12:56 KOI: CC&R'S

CORAL M. CUMMINGS CLERK AND RECORDER

FEE: \$0.00

BY: Jeannie Deane

TO: US FOREST SERVICE

Cross Index No. 4 ES 1252 T. 36N. R. 26W. P.M., MT

Adopted July 1, 1981, Montana Board of Professional Engineers & Land Surveyors