

# CERTIFIED CORNER RECORDATION

Corner 6 ES 1252  
SW 1/16 S30 T. 36 N. R. 26 W. P.M.M. LINCOLN County

## I. Record: 1893 Subdivision and Meanders of T36N, R26W, by Peter M. Cardell and Abraham L. Jaqueth:

1933 U. S. Forest Service Exchange Survey No. 1252 by A. O. Modlin: Point for the SW. 1/16 sec. cor. of Sec. 30, heretofore located, which I establish for 1/16 sec. cor. and Cor. No. 6 of this survey as follows: Place a small stone marked with a cross (X) under a limestone 25x12x7 ins., 15 ins. in the ground, marked 1/16 on the N. and 6 ES 1252 on the NW. faces, and a cross (X) on top for the exact corner point, from which:

A cross (X) on a tamarack 12 ins. dia. bears N1°55'W 63 lks. dist.

A cross (X) on a Douglas fir 8 ins. dia. bears N60°E 23 lks. dist., each blazed and scribed SW 1/16 S 30-6 E S 1252 B T.

1970 Plat No. 1711 by J. H. Ninneman, Mt. Reg. No. 534ES: A steel pin—a 14" fir N49°E 8 ft. A 10" fir S5°W 23 ft. Scribed and posted. Fragments of stone on surface one marked 1 1/16 and one marked 6 E S 1250.

## II. Found a fractured scattered stone, not set, lying on the ground with 6 E S visible on one portion and 1/16 visible on another. Found a 15" diam. fir with a healed face. Cut into the fir and found scribing reading 1252.

## III. From the found original bearing tree, we pulled the original distance at the original bearing to determine a position for the original corner. From there we pulled the original distance at the original bearing to find a 10" diam. larch stump with visible ax marks. After determining these to be the original bearing trees we did a distance-distance intersection from the found original bearing trees to determine the position for the original corner. In the process of digging the hole for a new monument we found the memorial stone with an "X" chiseled on it set by A. O. Modlin, the original surveyor, in 1933. At the position of the found memorial stone we set a 2 1/2" diam., 30 in. long aluminum pipe, 20 ins. in the ground with 3 1/4" diam. aluminum cap marked as shown, from which:

### The original bearing trees

A fir, 15 ins. diam, bears N58°E, 15.5 ft. dist., mkd. with a healed face.

A larch stump, 10 ins. diam, bears N5°W, 41.3 ft. dist., with visible ax marks.

### The Ninneman bearing trees

A fir, 14 ins. diam, bears N13°E, 5.4 ft. dist., with a healed face.

A fir, 12 ins. diam, bears S17°W, 24.2 ft. dist., with pitched face.

A 3/4 in. diam. uncapped rebar, bears S89°37'06"W, 5.131 ft. dist.

Buried the memorial stone and fractured rock alongside the aluminum pipe.

Painted red the scribed faces and red bands around the bearing trees. Placed Bearing Tree and Land Survey Monument signs on the bearing trees. Set a 6 ft. galvanized steel guard post with Land Survey Monument and Property Boundary decals attached, NORTH, 3 ft.

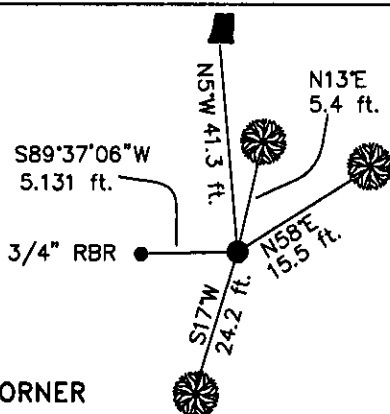
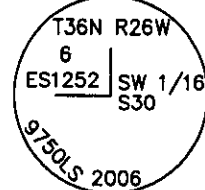
Date of Fieldwork: 10/23/2006

Survey crew: Tom Hommel, Steve Boyer

Magnetic declination: 20° East assumed

Equipment used: Hand compass and loggers tape

U.S. Forest Service, Supervisors Office, 1101 Hwy. 2 West, Libby, MT 59923 (406) 293-6211



NOT TO SCALE

SKETCH OF CORNER

### CERTIFICATION

I, Thomas M. Hommel 10800LS  
certify the information shown herein is true and correct.

Signature Ground Party Chief

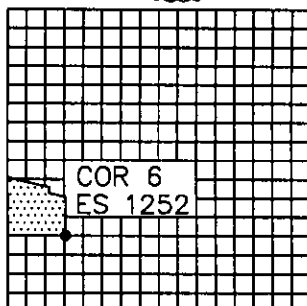
I, Steven A. Boyer  
certify that this Corner Record correctly represents work performed by me or under my direction in compliance with the "Corner Recordation Act" (70-22-401, et seq., M.C.A.).

Signature of Surveyor & Seal

Date: 11/01/2006 Reg. No. 9750LS

Employer: U. S. Forest Service

Sec. 30



• corner this sheet

Office of Clerk and Recorder, County of Lincoln This "corner

record" was filed for 199641 BOOK: CCR CC&R'S PAGE: 10975 Pages: 1

was noted on the cor. STATE OF MONTANA LINCOLN COUNTY

book No. RECORDED: 12/13/2006 12:55 KOI: CC&R'S

CORAL M. CUMMINGS CLERK AND RECORDER

FEE: \$0.00

BY: [Signature]

TO: US FOREST SERVICE

6 ES 1252

Cross Index No. U-2 T. 36N. R. 26W. P.M., MT

Adopted July 1, 1981, Montana Board of Professional Engineers & Land Surveyors