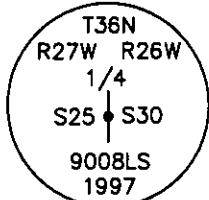


CERTIFIED CORNER RECORDATION

Corner 1/4 S25 | S30 T 36 N. R. 26/27 W. P.M.M. LINCOLN County

- I. Record: 1893 West Boundaries of T36N, R26 & 27W. by Peter M. Cardell and Abraham L. Jaqueth: Set a red sand stone, 14x12x10 ins. in the ground, for 1/4 Sec. Cor. marked 1/4 on W face. From which:
- A fir, 5 ins. diam, bears S27°E, 28 lks. dist., mkd. 1/4 S BT.
 - A fir, 10 ins. diam, bears S80°W, 67 lks. dist., mkd. 1/4 S BT.
 - 1933 U. S. Forest Service Exchange Survey No. 1252 by A. O. Modlin: Calls the 1/4 sec. cor. for secs. 25 and 30 as described in the original record.
 - 1975 Certified Corner Recordation by Dean K. Marquardt, Mt. Reg. No. ES2989: Finds the original stone and sets 2 new bearing trees:
 - A 12" ponderosa pine bears N12°W 29.37 feet
 - A 10" ponderosa pine bears S29°W, 9.24 feet.
 - 1975 Certificates of Survey No. 152 and 181 by D. K. Marquardt, Mt. Reg. No. ES2989: Found original stone.
 - 1976 Certificate of Survey No. 181A by D. K. Marquardt, Mt. Reg. No. ES2989: Found original stone.
 - 1986 Certificate of Survey No. 1496 by D. K. Marquardt, Mt. Reg. No. ES2989: Found original stone.
 - 1997 Certified Corner Recordation by Ronald A. Pearson, Mt. Reg. No. 9008LS: Found original stone, 8x6 ins., firmly set, protruding 3 ins. above the ground, mkd. "1/4" on W. face. From which:
 - A pine, 14 ins. diam, bears S12°E, 29.3 ft. dist., mkd. with a healed face. (no record)
 - A pine, 11 ins. diam, bears S°W, 9.2 ft. dist., mkd. with a healed face. (no record)
- At the corner point as determined by the found stone, set an aluminum pipe, 30 ins. long, 2 1/2 ins. diam., 23 ins. in the ground, surrounded by a 2.0 ft. diam. rock collar, with a 3 1/4 in. diam. brass cap, mkd. as shown.



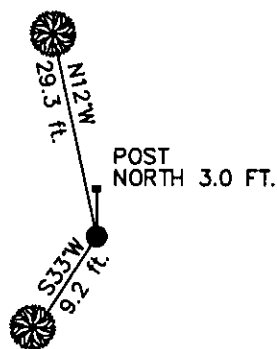
Set a 6 ft. steel post, North, on property line, 3.0 ft. dist. from the corner, with Land Survey Monument and Property Boundary decals attached. No original bearing trees found. Painted bearing trees and attached Land Survey Monument and Bearing Tree signs.

2001 Certificate of Survey No. 3041 by James R. Staples, Mt. Reg. No. 9958LS: Found original stone. Replace with alum. monument 9958LS. See corner record.

- II. Found a 3 1/4 in. diam. aluminum cap in a collar of stone, firmly set and marked as shown above, from which:
- A pine, 12 ins. diam, bears S33°W, 9.2 ft. dist., mkd. with a healed face. (1975 Marquardt)
 - A pine, 16 ins. diam, bears N12°W, 29.3 ft. dist., mkd. with a healed face. (1975 Marquardt)
 - A steel post bears NORTH, 3.0 ft. dist. with a Land Survey Monument decal attached.
- III. Painted red the scribed face and a red band around the bearing trees.

Date of Fieldwork: 10/20/2006
 Survey crew: Tom Hommel
 Magnetic declination: 20° East assumed
 Equipment used: Hand compass and loggers tape
 U.S. Forest Service, Supervisors Office, 1101 Hwy. 2 West, Libby, MT 59923 (406) 293-6211

SKETCH OF CORNER



NOT TO SCALE

CERTIFICATION

I, Thomas M. Hommel 10800LS
 certify the information shown herein is true and correct.

Thomas M. Hommel
 Signature Ground Party Chief

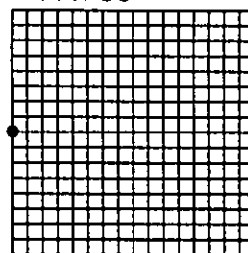
I, Steven A. Boyer
 certify that this Corner Record correctly represents work performed by me or under my direction in compliance with the "Corner Recordation Act" (22-22-103, Montana M.C.A.)

Steven A. Boyer
 Signature of Surveyor & Seal 9750LS

Date: 10/31/2006 Reg. No. 9750LS

Employer: U. S. Forest Service

Sec. 30



• corner this sheet

Office of Clerk and Recorder, County of Lincoln

199639 BOOK: CCR CC&R'S PAGE: 10973 Pages: 1
 STATE OF MONTANA LINCOLN COUNTY
 RECORDED: 12/13/2006 12:53 KOI: CC&R'S
 CORAL M. CUMMINGS CLERK AND RECORDER
 FEE: \$0.00 BY: James R. Staples
 TO: US FOREST SERVICE

Cross Index No. T-1 T. 36N. R. 26W. P.M., MT

Adopted July 1, 1981, Montana Board of Professional Engineers & Land Surveyors