

CERTIFIED LAND CORNER RECORDATION

DESCRIPTION OF CORNER EVIDENCE FOUND, AND ORIGINAL RECORD (IF KNOWN)

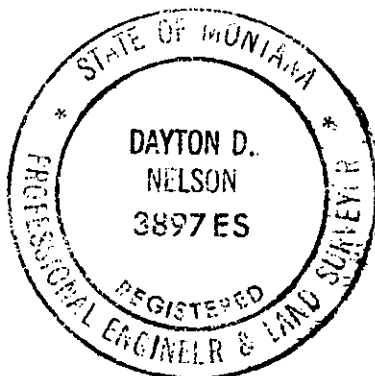
CORNER WAS IN A ROCK PILE @ THE INTERSECTION OF AN EXISTING FENCE AND REMNANTS OF AN OLD FENCE. THE PILE WAS INSIDE A ROLL OF WOVEN WIRE FROM THE OLD FENCE AND HAD BEEN THERE FOR SEVERAL YEARS. ORIG. NOTES CALL FOR LIMESTONE 12"X10"X8"-8" IN GROUND, MARKED 1-4 ON W. FACE W/ PITS 18"X18"X12" N&S. OF STONE 5 1/2 FT. DIST. AND RAISED A MOUND OF EARTH 1 1/2 FT. HIGH 3 1/2 FT @ BASE ALONG SIDE. ORIG. STONE COULD NOT BE IDENT. BUT LOCATION OF CORNER BY SURVEY FROM SOUTH AND NORTH SEC. CORNERS AGREED W/ RECORD LOCATION. CORNER HAD BEEN USED IN EARLIER SURVEY.

DESCRIPTION OF MONUMENT AND ACCESSORIES ESTABLISHED TO PERPETUATE THE ORIGINAL LOCATION OF THIS CORNER:

SET 5/8" REBAR IN ROCK PILE 14" IN GROUND. AT CORNER LOCATION. Date of work: 9/10/98

SKETCH, WITH COURSE AND DISTANCE TO ADJACENT CORNERS IF DETERMINED IN THIS SURVEY. (MAY SKETCH OR PASTE REPRODUCTION ON REVERSE SIDE.)

Surveyor's Seal



I, DAYTON D. NELSON  
certify that the information shown herein is true and correct.

Dayton D. Nelson  
Signature of Ground Party Chief

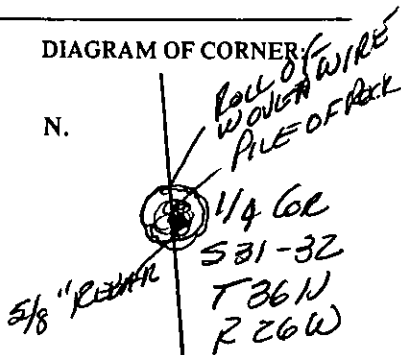
I, DAYTON D. NELSON  
certify that I have carefully performed or reviewed the work done on the diagrammed corner as reported on this recordation form and approve the same.

Dayton D. Nelson  
Signature of Surveyor

3897 ES  
Registration Number

DIAGRAM OF CORNER

N.



= Corner recorded on the sheet

Office of Clerk and Recorder, County of \_\_\_\_\_

This "corner record" was filed for record on the \_\_\_\_\_ day

assigned page No. \_\_\_\_\_, in book No. \_\_\_\_\_

182565 BOOK: CCR CC&R'S PAGE: 10781 Pages: 1  
STATE OF MONTANA LINCOLN COUNTY  
RECORDED: 02/18/2005 2:05 KOI: CC&R'S  
CORAL M. CUMMINGS CLERK AND RECORDER  
FEE: \$0.00 BY: Frankie Dennis 1 is  
TO: DAYTON NELSON-SURVEYOR Deputy  
County Official

Cross Index No. \_\_\_\_\_ T \_\_\_\_\_ R \_\_\_\_\_ Mer.