

CERTIFIED LAND CORNER RECORDATION

DESCRIPTION OF CORNER EVIDENCE FOUND, AND ORIGINAL RECORD (IF KNOWN)

THE ORIGINAL STONE WAS FOUND AND USED ON PREVIOUS SURVEY. IT WAS A GRANITE STONE SET IN THE GROUND AT A FENCE INTERSECTION BASED ON THE EXISTING EVIDENCE OF THE FENCES. THE STONE WAS MARKED SC W/5 NOTCHES ON EAST AND 1 NORTH ON WEST. RECORD CALLS FOR A LIMESTONE 18"X10"X6" 18" IN GROUND W/ PITS 18"X18"X12" ON E&W OF STONE W/MOUND OF EARTH 2' HIGH & 4 1/2 FT @ BASE ALONGSIDE. AT THE RECORD DIST. ON THE TWP. LINE FROM CORNER 32 WHICH WAS FOUND I FOUND THE REMAINING EVIDENCE OF FENCE INTERSECTION. STONE WAS GONE.

DESCRIPTION OF MONUMENT AND ACCESSORIES ESTABLISHED TO PERPETUATE THE ORIGINAL LOCATION OF THIS CORNER:

I SET A 5/8" REBAR W/CAP AND PLACED ROCKS AROUND IT. ALSO SET A STEEL FENCE POST AT CORNER W/ LOCATION TAG. Date of work: 9/10/98

SKETCH, WITH COURSE AND DISTANCE TO ADJACENT CORNERS IF DETERMINED IN THIS SURVEY. (MAY SKETCH OR PASTE REPRODUCTION ON REVERSE SIDE.)

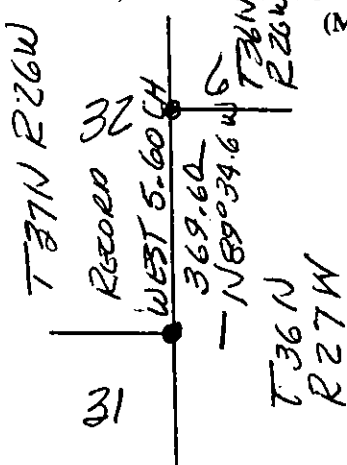
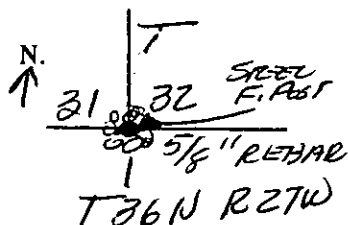
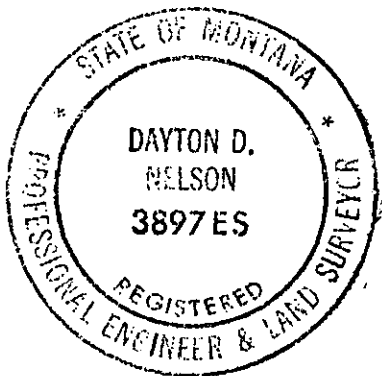


DIAGRAM OF CORNER:



Surveyor's Seal



I, DAYTON D. NELSON
certify that the information shown herein is true and correct.

Dayton D. Nelson
Signature of Ground Party Chief

I, DAYTON D. NELSON
certify that I have carefully performed or reviewed the work done on the diagrammed corner as reported on this recordation form and approve the same.

Dayton D. Nelson
Signature of Surveyor

3897 ES
Registration Number

= Corner recorded on the sheet

Office of Clerk and Recorder, County of _____

This "corner record" was filed for record on the _____

assigned page No. _____, in book No. _____

182564 BOOK: CCR CCR'S PAGE: 10780 Pages: 1
STATE OF MONTANA LINCOLN COUNTY
RECORDED: 02/18/2005 2:00 KOI: CCR'S
CORAL M. CUMMINGS CLERK AND RECORDER
FEE: \$0.00 BY: Jeannie Leung it and is
TO: DAYTON NELSON-SURVEYOR
County Official Jeannie Leung