

CERTIFIED CORNER RECORDATION

Corner SW cor. S28 T. 36 N. R. 26 W. P.M.M. LINCOLN County

I. Record: 1893 GLO survey by McCardell and Jaqaeth : Set a post and 4 bearing trees.

1975 Corner Recordation by D.K. Marquardt: Found mound of rock and wood post from which:

A pine stump, bears N.61°W., 66.59 ft. dist. (Record N.61°15'W. 66.66 ft)

Set a 1 3/4 in. diam. iron pipe with brass cap, from which:

A pine, 20 ins. diam., bears N.10°E., 56.58 ft. dist.

A pine, 10 ins. diam., bears S.50°E., 85.23 ft. dist.

1992 Corner Recordation by R. Pearson: Found 2 in. diam. pipe with brass cap from which:

A pine stump, 26 ins. diam., bears N.10°E., 56.60 ft. dist.

A pine, 17 ins. diam., bears S.50°E., 85.30 ft. dist.

A burnt root crown, bears N.61°W., 66.70 ft. dist.

A pine, 10 ins. diam., bears N.61°E., 54.60 ft. dist., mkd. T36N R26W S28 BT.

II. Found: A 2 in. diam. iron pipe with brass cap firmly set in fence line running North-South, mkd. as shown from which:

A pine, 14 ins. diam., bears N.62°E., 54.70 ft. dist.

A pine, 19 ins. diam., bears S.50°E., 85.60 ft. dist.

III. Perpetuation:

A pine, 6 ins. diam., bears S.67°W., 21.80 ft. dist., mkd. T36N R26W S32 BT.

A pine, 7 ins. diam., bears N.10°W., 15.80 ft. dist., mkd. T36N R26W S29 BT.

Painted faces and 6 in. wide red bands to all bearing trees and attached Land Survey Monument and Bearing Tree signs.

Magnetic declination: 20° East

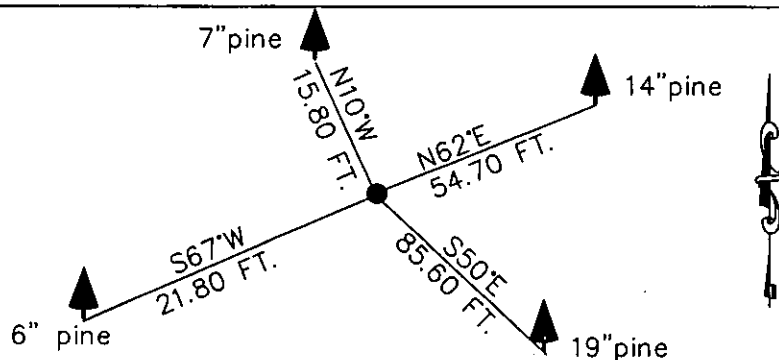
Equipment used: Hand compass and loggers tape

T36N R26W

S29S28
S32S33

ES 2989 75

Kootenai Surveyors Inc., 314 California Av., Libby, MT. 59923 (406) 293-4354



SKETCH OF CORNER

CERTIFICATION

Doug Schuhknecht

I certify the information shown herein is true and correct.

Signature Ground Party Chief

Alvah F. Hughes

I certify that this Corner Record correctly represents work performed by me or under my direction in compliance with the "Corner Recordation Act" (70-22-101, et seq., M.C.A.)

Signature of Surveyor & Seal

Date: 06/21/2004 Reg. No. 7322-LS

Employer: Kootenai Surveyors Inc.

Office 180694 BOOK: CCR CC&R'S PAGE: 10703 Pages: 1

STATE OF MONTANA LINCOLN COUNTY

RECORDED: 11/16/2004 1:20 KOI: CC&R'S

CORAL M. CUMMINGS CLERK AND RECORDER

was n: FEE: \$0.00

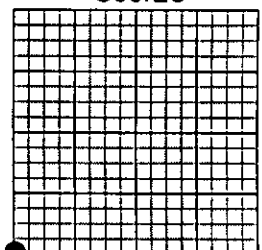
book n: TO: FILED

BY: Jeannette Dennis, in

County Official

10703

Sec. 28



• corner this sheet

Cross Index No. V 09 T. 36N. R. 26W. P.M., MT

Adopted July 1, 1981, Montana Board of Professional Engineers & Land Surveyors