

CERTIFIED CORNER RECORDATION

Corner N 1/4 S28 T 36 N. R. 26 W. P.M.M. LINCOLN County

I. Record: 1893 GLO survey by McCardell and Jaqaeth : Set a post 3 ft. long in the ground, mkd. 1/4 on the W face, from which:

A fir, 7ins. diam., bears S.37°E., 38 lks. dist., mkd. 1/4 S28 BT.

A fir, 6 ins. diam., bears N.37°W., 90 lks. dist., mkd. 1/4 S21 BT.

1960 BLM Remon: Set a 2 1/2 in. diam. iron post with brass cap from the remains of the original post and bearing trees from which:

A fir, 16 ins. diam., bears S.37°E., 38 lks.(24.42 ft.) dist., mkd. 1/4 S BT.(record)

A fir, 16 ins. diam., bears N.34°15'W., 28 lks.(18.48 ft.) dist. mkd. 1/4 S BT.

(Record: N.37°W., 90 lks.)

A fir, 8 ins. diam., bears N.40°E., 53 lks.(34.98 ft.) dist., mkd. 1/4 S21 BT.

A fir, 6 ins. diam., bears S.28°30'E., 45 lks.(29.70 ft.) dist., mkd. 1/4 S28 BT.

Raise a mound of stone, 3 ft. base, 2 ft. high, N. of iron post.

II. Found: A 3 1/4 in. diam. BLM brass cap firmly set from which:

A fir, 15 ins. diam., bears N.40°E., 34.90 ft. dist., with overgrown face.

A fir, 23 ins. diam., bears S.37°E., 26.00 ft. dist., with overgrown face.

A fir, 8 ins. diam., bears S.28°E., 30.00 ft. dist., with overgrown face.

A mound of stone bears N. of found monument.

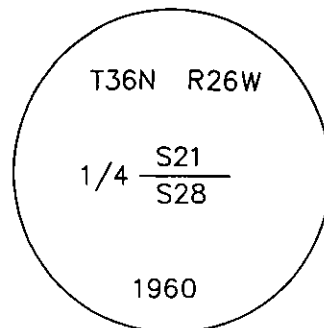
III. Perpetuation:

Painted faces and 6 in. wide red bands to all bearing trees and attached Land Survey Monument and Bearing Tree signs.

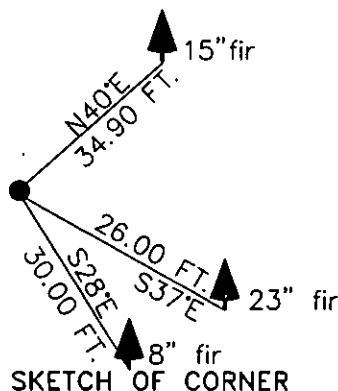
Set a steel post with attached property boundary sticker 3 ft. S. on line.

Magnetic declination: 20° East

Equipment used: Hand compass and loggers tape



Kootenai Surveyors Inc., 314 California Av., Libby, MT. 59923 (406) 293-4354



SKETCH OF CORNER

CERTIFICATION

I, Doug Schuhknecht
certify the information shown herein is true and correct.

Signature Ground Party Chief

Alvah F. Hughes

I certify that this Corner Record correctly represents work performed by me or under my direction in compliance with the "Corner Recordation Act" (70-22-101, et seq.)

Signature of Surveyor & Seal

Date: 06/21/2004 Reg. No. 7322-LS

Employer: Kootenai Surveyors Inc.

180691 BOOK: CCR CC&R'S PAGE: 10700 Pages: 1

(STATE OF MONTANA LINCOLN COUNTY

s "corner

RECORDED: 11/16/2004 1:05 KOI: CC&R'S

CORAL M. CUMMINGS CLERK AND RECORDER

FEE: \$0.00

BY: James A. Seaver

in

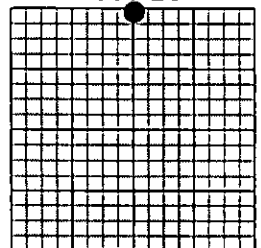
TO: FILED

BOOK INU.

County Official

10700

Sec.28



Cross Index No. R 11 T. 36N. R. 26W. P.M., MT

Adopted July 1, 1981, Montana Board of Professional Engineers & Land Surveyors

• corner this sheet