

CERTIFIED CORNER RECORDATION

Corner W 1/16 S28 T 36 N. R. 26 W. P.M.M. LINCOLN County

I. Record: 1992 Certificate of Survey No. 1926 by Block's Surveying:

Set a 5/8 in. diam. steel rebar, 24 ins. long with a 1 1/4 in. diam. orange P.V.C. cap, stamped BLOCK 7918-S.

II. Found: At the intersection of a fence line running North-South and East-West, found a 5/8 in. diam. steel rebar firmly set with a 1 1/4 in. diam. orange P.V.C. cap stamped BLOCK 7918-S.

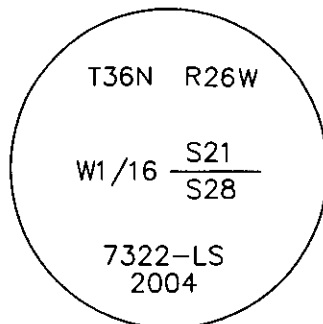
III. Perpetuation: We accept the found position of the Block monument, and remove the P.V.C. cap and replace it with a standard 3 1/4 in. diam. U.S.D.A alum. cap, mkd. as shown below from which:

- A pine, 18 ins. diam., bears S.10°E., 55.50 ft. dist., mkd. W 1/16 S28 BT.
- A pine, 23 ins. diam., bears S.30°W., 40.80 ft. dist., mkd. W 1/16 S28 BT.

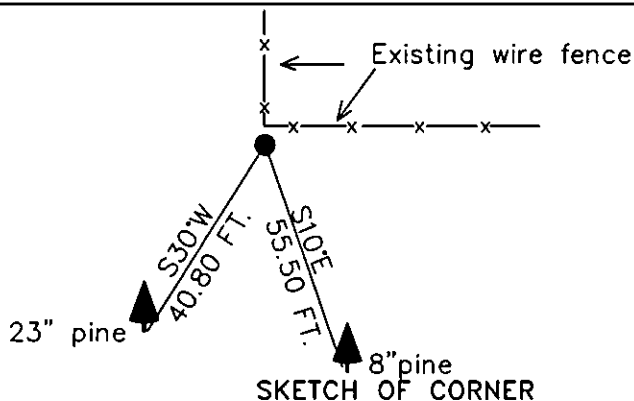
Painted faces and 6 in. wide red bands to all bearing trees and attached Land Survey Monument and Bearing Tree signs.
Set a steel post with attached property boundary sticker 3 ft. S. on line.

Magnetic declination: 20° East

Equipment used: Hand compass and loggers tape

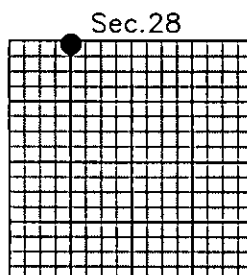


Kootenai Surveyors Inc., 314 California Av., Libby, MT. 59923 (406) 293-4354



CERTIFICATION
I, Doug Schuhknecht
certify the information shown herein is true and correct.
Signature Ground Party Chief
Alvah F. Hughes
I certify that this Corner Record correctly represents work performed by me or under my direction in compliance with the "Corner Recordation Act" (70-22-101, et seq.)
Alvah F. Hughes
Signature of Surveyor & Seal
Date: 06/21/2004 Reg. No. 7322-LS
Employer: Kootenai Surveyors Inc.

180690 BOOK: CCR CC&R'S PAGE: 10699 Pages: 1
Off STATE OF MONTANA LINCOLN COUNTY "corner
rec RECORDED: 11/16/2004 1:00 KOI: CC&R'S
CORAL M. CUMMINGS CLERK AND RECORDER
wa: FEE: \$0.00 BY: Eranni Dumas in
bo: TO: FILED
County Official



10699

Cross Index No. R 10 T. 36N. R. 26W. P.M., MT

Adopted July 1, 1981, Montana Board of Professional Engineers & Land Surveyors

• corner this sheet