

# CERTIFIED CORNER RECORDATION

Corner NW cor. S28 T 36 N. R. 26 W. P.M.M. LINCOLN County

## I. Record: 1893 GLO survey by McCardell and Jaqaeth : Set a post and 4 bearing trees.

1960 BLM Remon: Set a 2 1/2 in. diam. iron post with brass cap from the remains of the original bearing trees from which:

A stump, 33 ins. diam., bears N.61°E., 144 lks.(95.04 ft.) dist., visible marks BT.  
(Record)

A stump, 30 ins. diam., bears N.9°W., 286 lks.(188.76 ft.) dist., with burned out blaze.  
(Record)

A fir, 6 ins. diam., bears S.41°15'E., 245 lks.(161.70 ft.) dist., mkd. T36N R26W S28 BT.

A pine, 6 ins. diam., bears S.45°W., 249 lks.(164.34 ft.) dist., mkd. T36N R26W S29 BT.

Raise a mound of stone, 3 ft. base, 2 ft. high, W. of iron post.

1976 Corner Recordation by D.K. Marquardt: Found BLM brass cap from which:

A pine, 3 ins. diam., bears N.50°E., 11.00 ft. dist.

A pine, 4 ins. diam., bears N.70°W., 34.72 ft. dist.

## II. Found: A 3 1/4 in. diam. BLM brass cap firmly set at the intersection of fence lines running North-South and East-West.

## III. Perpetuation:

A pine, 16 ins. diam., bears N.63°E., 57.40 ft. dist., mkd. T36N R26W S21 BT.

A pine, 13 ins. diam., bears S.7°E., 45.00 ft. dist., mkd. T36N R26W S28 BT.

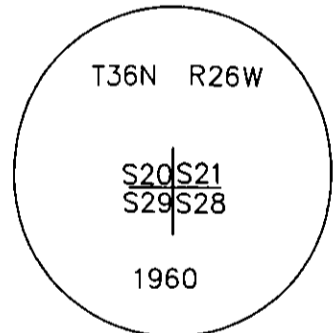
A pine, 13 ins. diam., bears S.62°W., 23.70 ft. dist., mkd. T36N R26W S29 BT.

A pine, 11 ins. diam., bears N.20°W., 11.80 ft. dist., mkd. T36N R26W S20 BT.

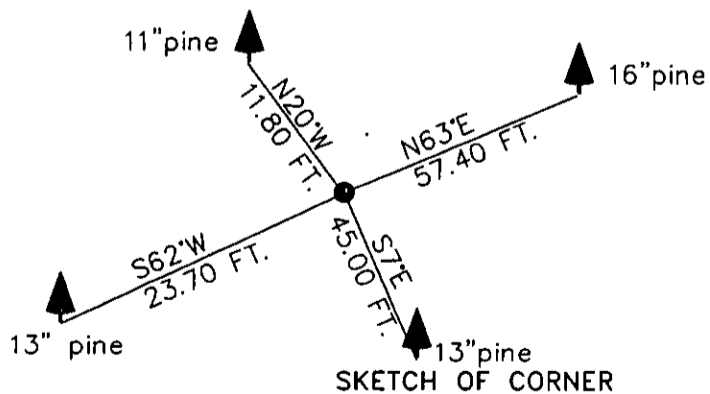
Painted faces and 6 in. wide red bands to all bearing trees and attached Land Survey Monument and Bearing Tree signs.

Magnetic declination: 20° East

Equipment used: Hand compass and loggers tape



Kootenai Surveyors Inc., 314 California Av., Libby, MT. 59923 (406) 293-4354



## CERTIFICATION

I, Pete Landis

certify the information shown herein is true and correct.

Signature Ground Party Chief

Alvah F. Hughes

I certify that this Corner Record correctly represents work performed by me or under my direction in compliance with the "Corner Recordation Act" 70-22-101, 8. Sec. 106, MCA.

Signature of Surveyor & Seal

Date: 06/21/2004 Reg. No. 7322-LS

Employer: Kootenai Surveyors Inc.

180689 BOOK: CCR CC&R'S PAGE: 10698 Pages: 1

Offic STATE OF MONTANA LINCOLN COUNTY

RECORDED: 11/16/2004 12:55 KOI: CC&R'S

reco CORAL M. CUMMINGS CLERK AND RECORDER

FEE: \$0.00

was TO: FILED

book no.

10698

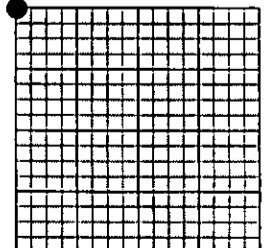
BY:

Deanna K. Kootenai  
Deputy

County Official

corner

Sec.28



• corner this sheet

Cross Index No. A-01 R9 T. 36N. R. 26W. P.M., MT

Adopted July 1, 1981, Montana Board of Professional Engineers & Land Surveyors