

# CERTIFIED CORNER RECORDATION

Corner S 1/16 S28 T 36 N. R. 26 W. P.M.M. LINCOLN County

I. Record: 1992 Certificate of Survey No. 1935 by Marquardt Surveying Inc.:  
Set a 5/8 in. diam. steel rebar, 24 ins. long with a 1 1/4 in. diam. yellow P.V.C. cap, stamped MARQUARDT 7328-S.

II. Found: Found a 5/8 in. diam. steel rebar firmly set with a 1 1/4 in. diam. yellow P.V.C. cap stamped MARQUARDT 7328-S.

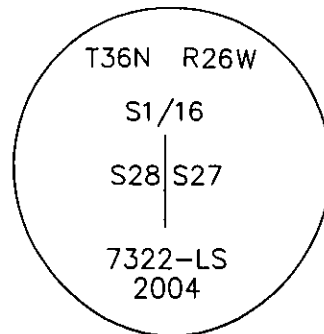
III. Perpetuation: We accept the found position of the Marquardt monument, and remove the P.V.C. cap and replace it with a standard 3 1/4 in. diam. U.S.D.A alum. cap, mkd. as shown below from which:

A fir, 10 ins. diam., bears N88°E., 17.00 ft. dist., mkd. S 1/16 S27 BT.  
A fir, 6 ins. diam., bears S.48°W., 19.00 ft. dist., mkd. S 1/16 S28 BT.

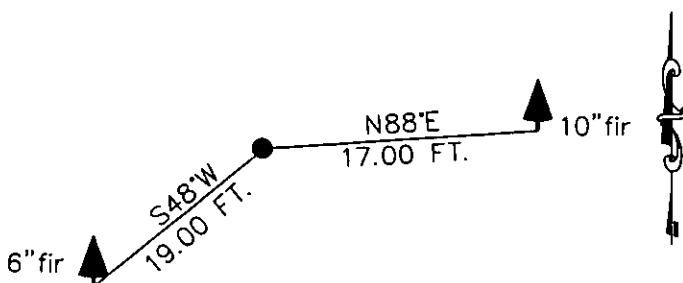
Painted faces and 6 in. wide red bands to all bearing trees and attached Land Survey Monument and Bearing Tree signs.

Set a steel post with attached property boundary sticker 3 ft. S. on line.  
Magnetic declination: 20° East

Equipment used: Hand compass and loggers tape



Kootenai Surveyors Inc., 314 California Av., Libby, MT. 59923 (406) 293-4354



SKETCH OF CORNER

CERTIFICATION

I, Doug Schuhknecht  
certify the information shown herein is true and correct.

Signature Ground Party Chief

I, Alvah F. Hughes  
certify that this Corner Record correctly represents the monument as performed by me or under my direction in compliance with the "Corner Recordation Act" (70-22-101, et seq.).

Signature of Surveyor & Seal

Date: 06/21/2004 Reg. No. 7322-LS

Employer: Kootenai Surveyors Inc.

180686 BOOK: CCR CC&R'S PAGE: 10695 Pages: 1

On STATE OF MONTANA LINCOLN COUNTY "corner

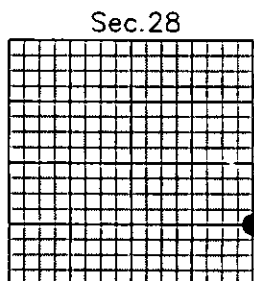
re RECORDED: 11/16/2004 12:40 KOI: CC&R'S

by CORAL M. CUMMINGS CLERK AND RECORDER

with FEE: \$0.00 BY: Jeannie Dennis in

book TO: FILED County Official

10695



• corner this sheet