

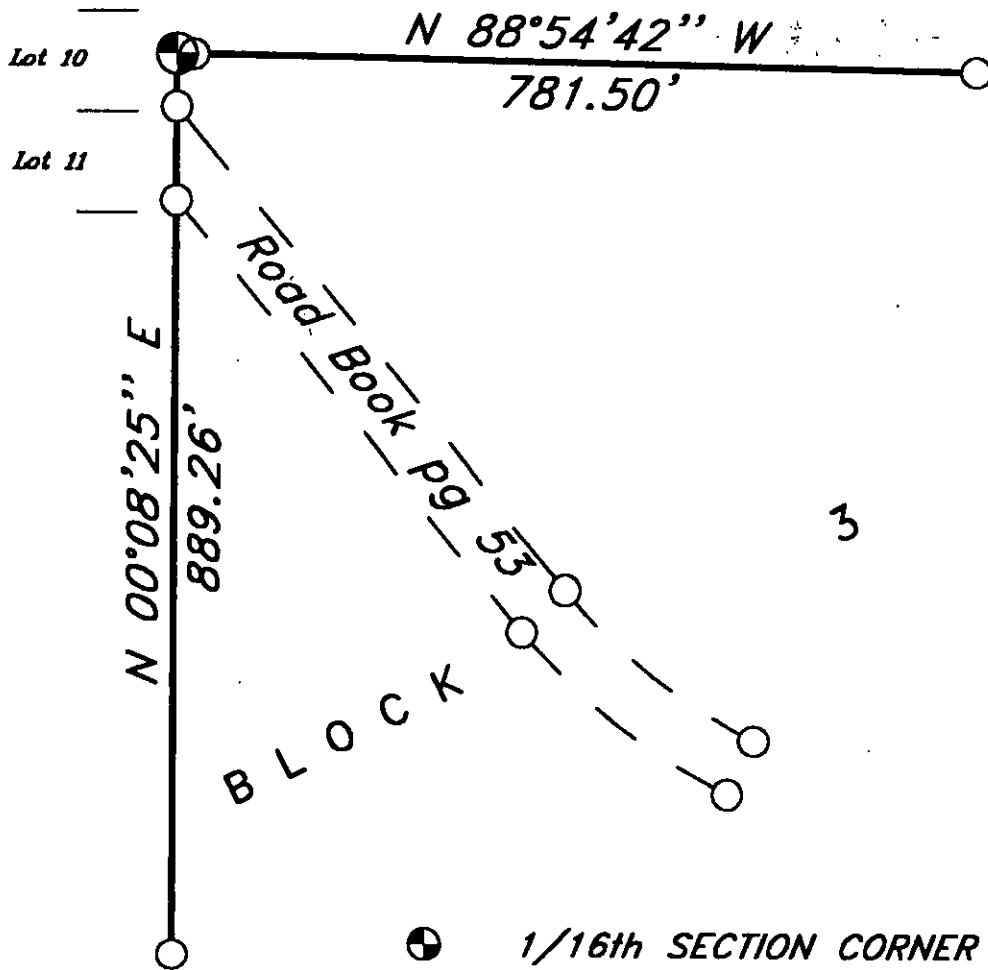
-- CERTIFIED CORNER RECORDATION

Corner NW 1/16 Corner Sec. 22 T. 36 N R. 26 W P.M.M. Lincoln County

Set a mag nail from which:

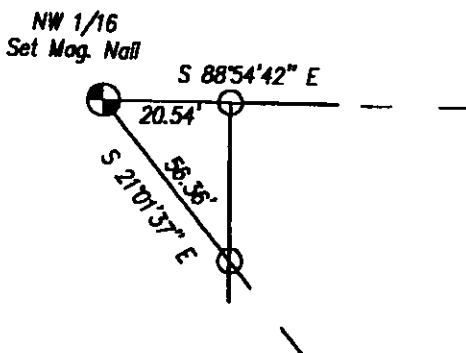
- a 5/8" x 24" rebar with plastic cap stamped BRECKENRIDGE 11706LS bears S 88° 54' 42" E 20.54 feet
- a 5/8" x 24" rebar with plastic cap stamped BRECKENRIDGE 11706LS bears S 21° 01' 37" E 56.36 feet

167518 BOOK: CCR CCR'S PAGE: 10610 Pages: 1
 STATE OF MONTANA LINCOLN COUNTY
 RECORDED: 05/23/2003 10:11 KOI: CCR'S
 CORAL M. CUMINGS CLERK AND RECORDER
 FEE: \$0.00
 DELIVER TO: FILED
 BY: *Jeannie Allen*



Section breakdown per COS 1211.

1/16th SECTION CORNER (AS NOTED)
 SET 5/8" X 24" REBAR WITH PLASTIC
 CAP STAMPED BRECKENRIDGE 11706LS



SKETCH OF CORNER

CERTIFICATION

I, Darren R. Breckenridge, a duly licensed Professional Engineer in the State of Montana, do hereby certify that the foregoing is a true and correct copy of the original survey record as shown to me by the Clerk and Recorder of Lincoln County, Montana.

DARREN R. BRECKENRIDGE

I, Darren R. Breckenridge, a duly licensed Professional Engineer in the State of Montana, do hereby certify that the foregoing is a true and correct copy of the original survey record as shown to me by the Clerk and Recorder of Lincoln County, Montana.

DARREN R. BRECKENRIDGE

Date: 05/21/2003 License No. 11706LS

Employer: Montana Mapping Associates

Office of Clerk and Recorder, County of Lincoln. This "corner record" was filed for record on 5-23-03 was noted on the cross-index plat and is assigned page No. _____, in book No. 10610

Jeannie Allen
County Official

Cross Index No. 0/14 T. 36 R. 26 P.M.M.

Adopted July 1, 1981, Montana Board of Professional Engineers & Land Surveyors

Sec. 22

• corner this sheet