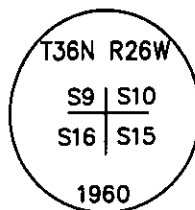


CERTIFIED CORNER RECORDATION

Corner Sec. cor. secs. 16 15 T. 36 N. R. 26 W. P.M.M. LINCOLN County

- I. Record: 1893 Original Record by Peter M. Cordell & Abraham L. Jaqueth; 80.00 chains. Set a limestone 18x8x6 ins., 12 ins. in the ground for Cor. to Secs. 9, 10, 15 & 16, marked with 4 notches on S. and 3 notches on E. sides from which:
- A fir, 12 ins. diam., N23°E, 23 lks., marked T36N R26W S 10 BT.
 - A fir, 10 ins. diam., S79°E, 46 lks., marked T36N R26W S 15 BT.
 - A fir, 8 ins. diam., S66°30'W, 40 lks., marked T36N R26W S 16 BT.
 - A fir, 12 ins. diam., N62°30'W, 18 lks., marked T36N R26W S 9 BT.
- 1959 B.L.M. Remonumentation by David R. Cunningham & William E. Stevens: The cor. of secs. 9, 10, 15 and 16, monumented with a limestone, 18x8x6 ins., firmly set and mkd. with 3 notches on the E. and 4 notches on the S. edges, and witnessed by the remains of the original bearing trees. At the corner point
- Set an iron post, 30 ins. long, 2 1/2 ins. diam., 28 ins. in the ground, with brass cap mkd.



from which, the remains of the original bearing trees:

- A fir, 16 ins. diam., N23°E, 23 lks. dist., marked with an overgrown blaze. (Record)
- A fir, 19 ins. diam., S79°E, 18 lks., marked with an overgrown blaze. (Record: S79°E, 46 lks.)
- A fir, 14 ins. diam., S66 1/2°W, 46 lks. dist., marked with an overgrown blaze. (Record: S66 1/2°W, 40 lks.)
- A stump, 14 ins. diam., N62 1/2°W, 40 lks. dist., marked T36N R26W S9 BT. (Record: N62 1/2°W, 18 lks.)

The new bearing tree:

- A fir, 11 ins. diam., N30 1/2°W, 87 lks. dist., marked T36N R26W S9 BT.

Bury the original stone alongside and raise a mound of stone, 3 ft. base, 2 ft. high, W. of the iron post.

- II. Found a 2 1/2 in. diam. iron pipe, 2 ins. above ground with a 3 1/4 in. diam. brass cap marked as shown above, from which:
- A fir, 20 ins. diam., N23°E, 16.0 ft. dist., marked with a healed face.
 - A fir, 20 ins. diam., S79°E, 11.2 ft. dist., marked with a healed face.
 - A fir, 16 ins. diam., S67°W, 30.0 ft. dist., marked with a healed face.
 - A stump, 14 ins. diam., N62°W, 26.4 ft. dist. (40 lks.), marked with a visible "B".
 - A stump, 11 ins. diam., N30°W, 57.4 ft. dist. (87 lks.), S 9 BT visible.

III. Establish one new bearing tree:

- A fir, 5 ins. diam., N52°W, 20.8 ft. dist., marked T36N R26W S 9 BT.

Set a 6 ft. galvanized steel guard post 3.0 ft. south and east, with Property Boundary and Land Survey Monument decals attached. Attached Bearing Tree and Land Survey Monument signs to the bearing trees. Painted red bands around the bearing trees.

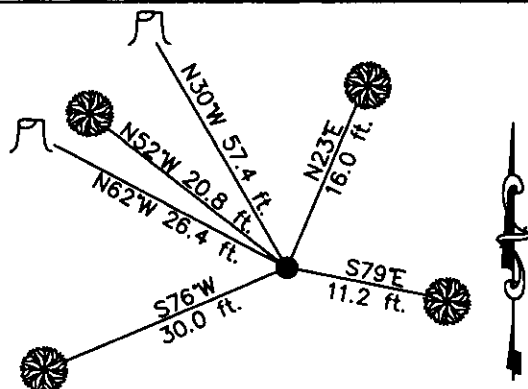
Date of Fieldwork: 9/18/2002

Survey crew: Steve Boyer, Tom Hommel

Magnetic declination: 20° East assumed

Equipment used: Hand compass and loggers tape

U.S. Forest Service, Supervisors Office, 1101 Hwy. 2 West, Libby, MT 59923 (406) 293-6211



SKETCH OF CORNER

NOT TO SCALE

CERTIFICATION

I, Steven A. Boyer, 9350 MONTANA,
certify the information shown herein is true and correct.

Steve A. Boyer
Signature of Surveyor & Seal

I, Roger O. Green, 13769LS,
certify that this Corner Record correctly represents work performed by me or under my direction in compliance with the "Corner Recordation Act" of 1972.

Roger O. Green
Signature of Surveyor & Seal

Date: 09/18/2002 Reg. No. 13769LS

Employer: U. S. Forest Service

Office of Clerk and Recorder, County of Lincoln This "corner

record" was filed for record on Jan 30, 2003

was noted on the cross-index plat and is assigned page No. 10598 in

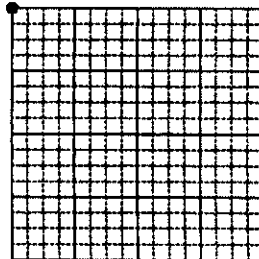
book No. _____

Carol M. Cummings
County Official

Cross Index No. J-13 T. 36N. R. 26W. P.M., MT

Adopted July 1, 1981, Montana Board of Professional Engineers & Land Surveyors

Sec. 15



• corner this sheet