

CERTIFIED CORNER RECORDATION

Corner W1/16 Secs. 10 15 T. 36 N. R. 26 W. P.M.M. LINCOLN County

- I. Record: No previous record.
- II. No evidence found.
- III. At the position determined by survey, set a 5/8 in. diam. rebar, 24 ins. long, 23 ins. in the ground, with a 3 1/4 in. diam. aluminum cap marked as shown:

T36N R26W
W 1/16 S10
 S15
13769LS
2002

The new bearing trees:

- A fir, 17 ins. diam., S69°W, 17.6 ft., marked W 1/16 S15 BT.
- A fir, 5 ins. diam., N11°W, 21.7 ft., marked W 1/16 S10 BT.

Set a 6 ft. galvanized steel guard post 3.0 ft. south and west, with Property Boundary and Land Survey Monument decals attached. Attached Bearing Tree and Land Survey Monument signs to the bearing trees. Painted red bands around the bearing trees.

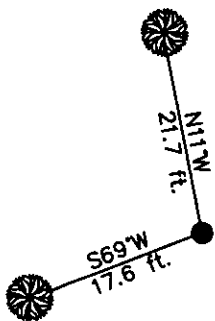
Date of Fieldwork: 11/5/2002

Survey crew: Steve Boyer, Tom Hommel

Magnetic declination: 20° East assumed

Equipment used: Hand compass and loggers tape

U.S. Forest Service, Supervisors Office, 1101 Hwy. 2 West, Libby, MT 59923 (406) 293-6211



SKETCH OF CORNER

NOT TO SCALE

CERTIFICATION
I, Steven A. Boyer 9750 MONTANA
certify the information shown herein is true and correct.
Roger O. Green
Signature of Bound-Party GREEN
I, Roger O. Green 13769LS
certify that this Corner Record correctly represents work
performed by me or under my direction in compliance with
the "Corner Recordation Act," 50-22-101, MCA.
Roger O. Green
Signature of Surveyor & Seal

Date: 11/05/2002 Reg. No. 13769LS

Employer: U. S. Forest Service

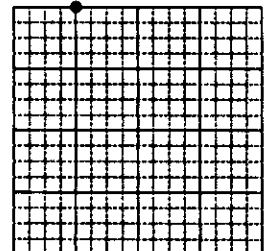
Office of Clerk and Recorder, County of Lincoln This "corner

record" was filed for record on Jan 30, 2003

was noted on the cross-index plat and is assigned page No. 10597 in

book No. Coal M. Cummins By RB
County Official

Sec. 15



• corner this sheet

Cross Index No. J-14 T. 36 N. R. 26 W. P.M., MT

Adopted July 1, 1981, Montana Board of Professional Engineers & Land Surveyors