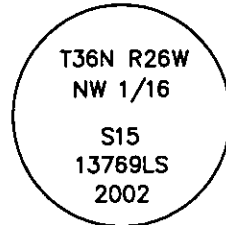


# CERTIFIED CORNER RECORDATION

Corner NW1/16 Sec. 15 T. 36 N. R. 26 W. P.M.M. LINCOLN County

- I. Record: No previous record.
- II. No evidence found.
- III. At the position determined by survey, set a 5/8 in. diam. rebar, 24 ins. long, 22 ins. in the ground, with a 3 1/4 in. diam. aluminum cap marked as shown:

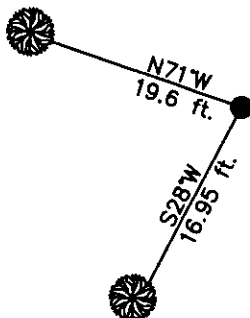


The new bearing trees:

- A fir, 11 ins. diam., S28°W, 16.95 ft., marked NW 1/16 S15 BT.
- A fir, 10 ins. diam., N71°W, 19.6 ft., marked NW 1/16 S15 BT.

Set a 6 ft. galvanized steel guard post 3.0 ft. north and east, with Property Boundary and Land Survey Monument decals attached. Attached Bearing Tree and Land Survey Monument signs to the bearing trees. Painted red bands around the bearing trees.

Date of Fieldwork: 11/4/2002  
 Survey crew: Steve Boyer, Tom Hommel  
 Magnetic declination: 20° East assumed  
 Equipment used: Hand compass and loggers tape  
 U.S. Forest Service, Supervisors Office, 1101 Hwy. 2 West, Libby, MT 59923 (406) 293-6211



SKETCH OF CORNER

NOT TO SCALE

**CERTIFICATION**

I, Steven A. Boyer 13769LS  
 certify the information shown herein to be true and correct.

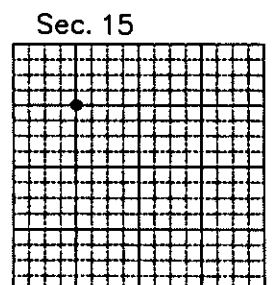
Steven A. Boyer  
 Signature of Surveyor

I, Roger O. Green GREEN  
 certify that this Corner Record correctly reflects work performed by me or under my direction in compliance with the "Corner Recordation Act" (28-22-101, et seq., M.C.A.).

Roger O. Green  
 Signature of Surveyor

Date: 11/04/2002 Reg. No. 13769LS  
 Employer: U. S. Forest Service

Office of Clerk and Recorder, County of Lincoln. This "corner record" was filed for record on Jan 30, 2003 was noted on the cross-index plat and is assigned page No. 10595 in book No. County Official



• corner this sheet