

# CERTIFIED CORNER RECORDATION

Corner NE1/16 Sec. 15 T. 36 N. R. 26 W. P.M.M. LINCOLN County

- I. Record: No previous record.
- II. No evidence found.
- III. At the position determined by survey, set a 5/8 in. diam. rebar, 24 ins. long, flush with the ground, with a 3 1/4 in. diam. aluminum cap marked as shown:

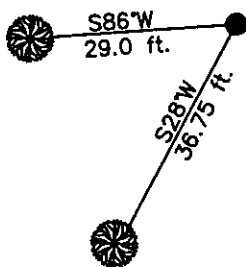


The new bearing trees:

- A fir, 14 ins. diam., S28°W, 36.75 ft., marked NE 1/16 S15 BT.
- A fir, 8 ins. diam., S86°W, 29.0 ft., marked NE 1/16 S15 BT.

Set a 6 ft. galvanized steel guard post 3.0 ft. south and west, with Property Boundary and Land Survey Monument decals attached. Attached Bearing Tree and Land Survey Monument signs to the bearing trees. Painted red bands around the bearing trees.

Date of Fieldwork: 11/4/2002  
 Survey crew: Steve Boyer, Tom Hammel  
 Magnetic declination: 20° East assumed  
 Equipment used: Hand compass and loggers tape  
 U.S. Forest Service, Supervisors Office, 1101 Hwy. 2 West, Libby, MT 59923 (406) 293-6211



SKETCH OF CORNER

NOT TO SCALE

CERTIFICATION

I, Steven A. Boyer 9750NSA, certify the information shown herein is true and correct.

Roger O. Green  
 Signature of Ground Party Chief

I, Roger O. Green 13769LS, certify that this Corner Record correctly represents work performed by me or under my direction in compliance with the "Corner Recordation Act" (70-22-100 N.S., M.C.A.)

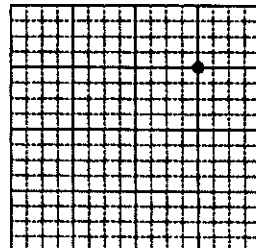
Roger O. Green  
 Signature of Surveyor & Seal

Date: 11/04/2002 Reg. No. 13769LS  
 Employer: U. S. Forest Service

Office of Clerk and Recorder, County of Lincoln This "corner record" was filed for record on Jan 30, 2003 10593 was noted on the cross-index plat and is assigned page No. 10593 in book No. Coral M. Cummins Co. RLB

County Official

Sec. 15



• corner this sheet

Cross Index No. K-16 T. 36N. R. 26W. P.M., MT

Adopted July 1, 1981, Montana Board of Professional Engineers & Land Surveyors