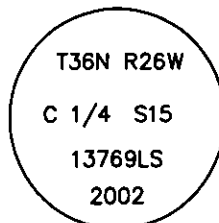


# CERTIFIED CORNER RECORDATION

Corner C 1/4 Sec. 15 T. 36 N. R. 26 W. P.M.M. LINCOLN County

- I. Record: No previous record.
- II. No evidence found.
- III. At the position determined by survey, set a 2 1/2 in. diam., 30 in. long aluminum pipe, 26 ins. in the ground, with a 3 1/4 in. diam. aluminum cap marked as shown:

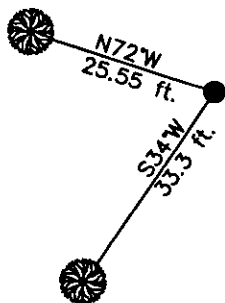


The new bearing trees:

- A fir, 17 ins. diam., S34°W, 33.3 ft., marked T36N R26W C 1/4 S15 BT.
- A larch, 9 ins. diam., N72°W, 25.55 ft., marked T36N R26W C 1/4 S15 BT.

Attached Bearing Tree and Land Survey Monument signs to the bearing trees. Painted red bands around the bearing trees.

Date of Fieldwork: 11/5/2002  
 Survey crew: Steve Boyer, Tom Hommel  
 Magnetic declination: 20° East assumed  
 Equipment used: Hand compass and loggers tape  
 U.S. Forest Service, Supervisors Office, 1101 Hwy. 2 West, Libby, MT 59923 (406) 293-6211



SKETCH OF CORNER

NOT TO SCALE

CERTIFICATION

I, Steven A. Boyer 97501 SAN, certify the information shown herein is true and correct.

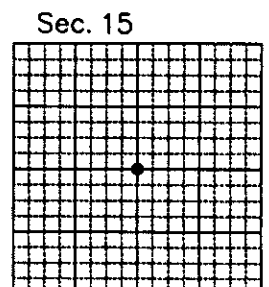
Roger O. Green  
 Signature of Land Party Owner

I, Roger O. Green 13769LS, certify that this Corner Record correctly represents work performed by me or under my direction in compliance with the "Corner Recordation Act" (70-23, MONTANA, 10 C.A.S.)

Roger O. Green  
 Signature of Surveyor & Seal

Date: 11/05/2002 Reg. No. 13769LS  
 Employer: U. S. Forest Service

Office of Clerk and Recorder, County of Lincoln This "corner record" was filed for record on Jan. 30, 2003 was noted on the cross-index plat and is assigned page No. 10591, in book No. Coal M. Cummings Bg RB  
 County Official



• corner this sheet

Cross Index No. L-15 T. 36N. R. 26W. P.M., MT